



Georgia Department of Transportation



• ECONOMIC IMPACT REPORT FOR •  
**SAVANNAH/HILTON HEAD INTERNATIONAL  
AIRPORT**



September 2020

According to Site Selection Magazine, Georgia is **ranked as the #1 state** for doing business.

## Georgia Airports Mean Business.

Airports in Georgia generate positive economic impacts as well as support many other sectors of local and state economies. In the summer of 2019, the Georgia Department of Transportation undertook a statewide study to estimate the annual economic impact of 102 study airports. The study estimated economic impacts for seven commercial airports and 95 general aviation airports. This report includes impacts related to **Savannah/Hilton Head International Airport** and summarizes all Statewide Airport Economic Impacts.

## Annual Economic Impacts for Savannah/Hilton Head International Airport

Residents, businesses, and visitors benefit from the state's well-developed airport system. While supporting transportation, healthcare, tourism, and commerce, airports contribute to the economy. The Economic Impact Study identified specific economic impacts associated with the **Savannah/Hilton Head International Airport** and other airport benefits. Key impacts for the **Savannah/Hilton Head International Airport** follow.

## Economic Impacts for Savannah/Hilton Head International Airport

The table below provides information on the sources of annual economic impact estimated for the **Savannah/Hilton Head International Airport**. For more information on the impacts reported here, consult the study's Technical Report available at [dot.ga.gov/IS/AirportAid](http://dot.ga.gov/IS/AirportAid).

### Annual Economic Impacts for Savannah/Hilton Head International Airport

	Employment	Payroll	Spending	Total Economic Activity
Airport Management & Business Tenants	34,831	\$2,279,697,600	\$839,093,000	\$3,118,790,600
Capital Investment	922	\$28,452,400	\$116,481,300	\$144,933,700
General Aviation Visitor Expenditures	475	\$12,855,500	\$19,927,400	\$32,782,900
Commercial Visitor Expenditures	8,558	\$229,301,000	\$688,346,100	\$917,647,100
<b>Total</b>	<b>44,786</b>	<b>\$2,550,306,500</b>	<b>\$1,663,847,800</b>	<b>\$4,214,154,300</b>

## Georgia Airports Support Connectivity

A flight from a Georgia airport is a gateway to over 40,000 worldwide airports, including over 19,000 airports in the US alone. When employers seek to relocate or expand, proximity to an airport is among the top 10 factors they consider in their decision making. Georgia's tourist industry also depends on the efficiency of air travel.

This map depicts destinations for flights departing from and arriving at **Savannah/Hilton Head International Airport** on any given day. This information is generated from the FAA's National Offload Program (NOP). Flights represent only a fraction of all destinations that can be reached directly from the airport. The map helps to show how the airport supports the travel needs of businesses, visitors, and residents of the airport's service area.

Annual General Aviation Visitors  
**92,492**

Annual Commercial Visitors  
**895,013**

Employment Supported  
**44,786**

Annual Payroll  
**\$2,550,306,500**

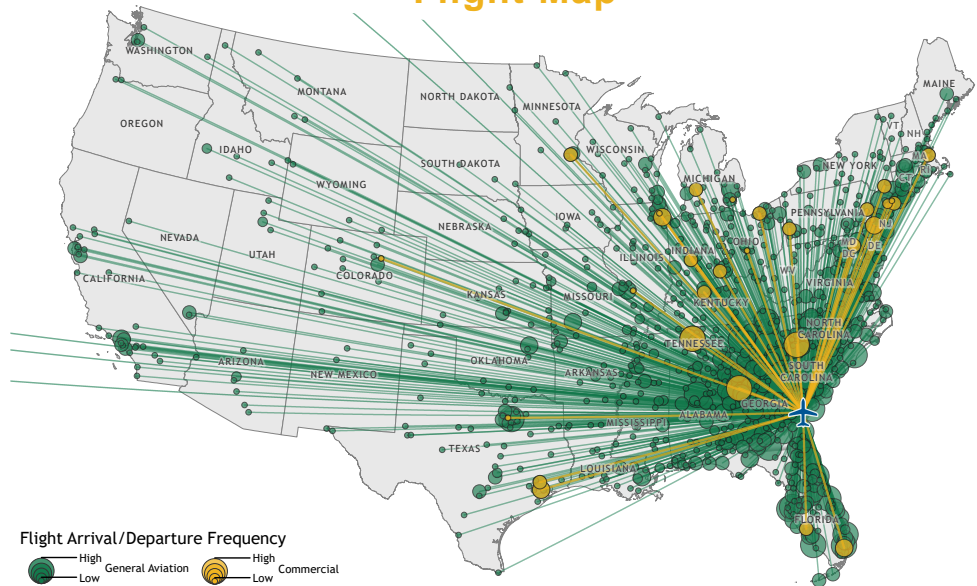
Annual Spending  
**\$1,663,847,800**

Annual Economic Impact  
**\$4,214,154,300**

Airport-Supported Annual State & Local Sales & Income Tax Revenues  
**\$169,399,240**

## Savannah/Hilton Head International Airport

### ← ..... Flight Map ..... →



Data Source: FAA Traffic Flight Management System (TFMS); CY 2018

## Top Five Destinations for Savannah/Hilton Head International Airport

**1** Atlanta, Georgia

**2** Augusta, Georgia

**3** Teterboro, New Jersey

**4** Athens, Georgia

**5** Brunswick, Georgia

## Statewide Economic Impacts

Shown below are total annual statewide economic impacts. All economic impacts shown in this report for Hartsfield-Jackson Atlanta International Airport were obtained from a separate study for that airport conducted by the City of Atlanta. As shown, when all Georgia airports are considered, total annual statewide economic impacts are estimated at 450,502 jobs, \$9.2 billion in annual payroll, and \$73.7 billion in annual economic activity.

### Statewide Economic Impacts All System Airports

	Hartsfield-Jackson Atlanta International Airport*	Commercial Study Airports	General Aviation Study Airports	State Total
Employment	383,242	52,376	14,893	450,502
Payroll	\$16.7 billion	\$1.3 billion	\$271 million	\$9.2 billion
Economic Activity	\$66.8 billion	\$2.2 billion	\$828 million	\$73.7 billion

\*2016-2017 Technical Report, City of Atlanta Economic Impact Study

## Economic Impact Categories and Measurements

The study identified impacts related to airport management (day-to-day airport operations), aviation-related business tenants, average annual capital investment, expenditures from visitors arriving on general aviation aircraft, and expenditures by visitors arriving on scheduled commercial airline flights. For each of these five categories, impacts were measured for **employment, payroll, spending, and annual economic activity**. Annual economic activity is the sum of payroll and spending. In addition, the study estimated state and local tax revenues that are generated by airport-supported activities.



Airport Management



Aviation-Related Business Tenants



Average Annual Capital Investment



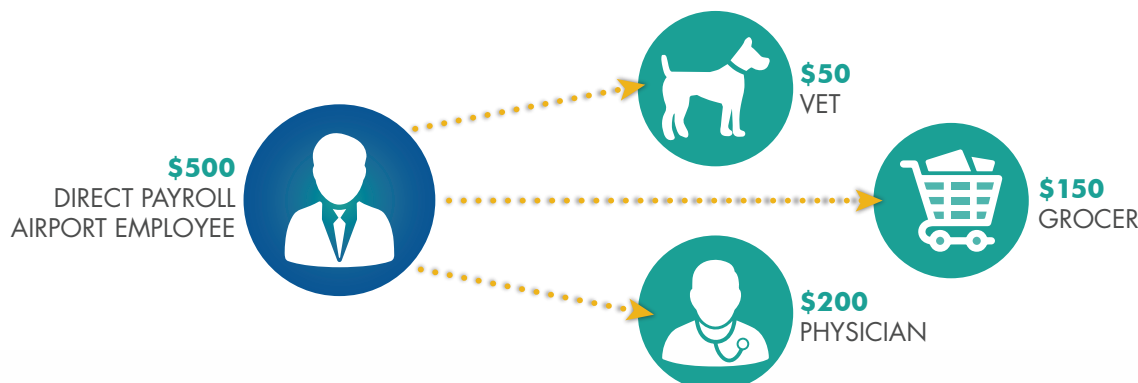
Visitors Arriving on General Aviation Aircrafts



Visitors Arriving on Commercial Flights

## Study Methodology

Data collection and survey efforts identified **direct** economic impacts in each of the five impact categories using an approved FAA methodology. A state input/output model (**IMPLAN**) was used to estimate additional **indirect and induced** impacts, sometimes referred to as multiplier impacts. Combined, direct plus indirect/induced impacts equal total state or airport specific economic impacts.



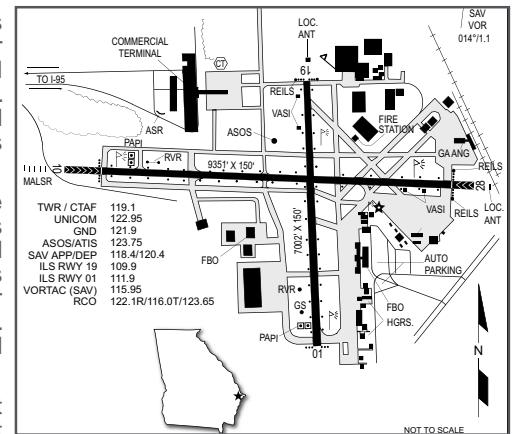
The direct impacts that start at the airport multiply within the state economy. The \$150 of direct impact spent with the grocery results in additional payroll (induced impacts) for the grocer's employees. As the grocery buys supplies, this additional business to business spending results in indirect impacts.

## Savannah/Hilton Head International Airport

Savannah is Georgia's largest coastal city located along the busy Savannah River. Savannah is just east of Interstate 95 in Chatham County in southeast Georgia and serves as the major air gateway to this region of Georgia and South Carolina. The Savannah-Hilton Head International Airport is seven miles from the city and is the second largest commercial airport in Georgia. A 9,351-foot long primary runway, Runway 10/28, and secondary 7,002-foot-long crosswind runway, Runway 01/19, serve commercial, general aviation, and military aircraft. Both runways are equipped with a precision instrument approach.

The airport supports commercial airline service, the Georgia Air National Guard, and corporate and general aviation activity including service as the HQ of Gulfstream Aerospace. The airport is served by a variety of carriers which include Allegiant Air, American, Delta Air Lines, United, and Jet Blue. There are dozens of businesses located at the airport that provide support services to the airport's commercial airline customers. The terminal building hosts various rental car agencies, restaurants, gift shops, other concessionaires, and a large contingent of TSA staff. The airport has over 75 business tenants and is also home to the Savannah Air National Guard Base. There are approximately 1,400 military-supported jobs at the airport.

Services provided by airport-based business include fueling, aircraft rental, charter service, flight training, and aircraft maintenance. There are numerous corporate flight departments located at the airport. With 145 employees and 257 employees, respectively, FedEx and Flight Safety International are two of the largest employers at the airport. The largest aviation business located at the airport is business jet manufacturer Gulfstream Aerospace, with almost 11,200 employees.



### Examples of How Savannah/Hilton Head International Airport Supports its Community

There is a good chance you benefit from different activities that the airport supports. Airports support healthcare and emergency services. Airports support the state's agricultural and forestry industries, and power companies rely on airports to keep electricity flowing. State and federal agencies use airports to protect the environment, and law enforcement benefits from airports. Businesses throughout Georgia rely on airports to improve their efficiency. Examples of how the airport benefits the community follow.



**Business Use:** The airport supports Gulfstream Aerospace, a subsidiary of General Dynamics. The company manufactures and performs maintenance on their aircraft at the airport. Gulfstream's Service Center at the airport ranks as the world's largest purpose-built business jet maintenance facility; the facility can accommodate 36 aircraft at a time. Gulfstream Aerospace designs, develops, manufactures, markets, services, and supports technologically advanced business jet aircraft. The company has produced more than 1,800 aircraft at its location at the airport. These planes are manufactured for corporate, government, private, and military customers throughout the world. With over 4,500 local employees, Gulfstream is the second largest employer in Savannah. By supporting this major employer, the airport helps to strengthen the area's economy and to add to its economic diversity.



**Military Use:** The Georgia Air National Guard operates on the airport. The 165 Airlift Wing of the Georgia Air National Guard is located on the airport and the Guard's Combat Readiness Training Center (CRTC) is located adjacent to the airport. The CRTC provides joint training capabilities for all branches of the U.S. military. In 2017, the Wing functioned as the central hub to fly relief supplies and personnel to Puerto Rico following Hurricane Maria. Units from the Wing responded in less than 24 hours, using the airport, to stand up a 24-hour air bridge operation to support relief efforts. In total, the Wing processed more than 2,000 personnel from over 200 Federal and State agencies and launched over 400 missions resulting in more than 2.3 million pounds of aid delivered to the island. The airport has played a similarly critical role in recovery efforts for several major hurricanes, both in the U.S. and in the islands.



**Agency Use:** There are many state and federal agencies that rely on the airport to support their missions and activities. For many agencies and organizations, flying is essential to their ability to perform with the utmost efficiency. Agencies that use the airport include U.S. Customs and Border Patrol. U.S. Customs clears pilots and passengers arriving from international destinations. The airport currently shares an office with the Port of Savannah; Customs started construction on their building at the airport in the fall of 2019. Over 270 international arrivals came to the airport in 2019 from Asia and Europe, primarily for servicing of Gulfstream aircraft. The Georgia Ports Authority also relies on the airport; the Port of Savannah is the third busiest gateway and fastest growing container port in the U.S. The Georgia Forestry Commission, the Georgia State Police, and Georgia Power also rely on the airport. By supporting these and other similar users, the airport adds to the area's economy, safety, and quality of life.



**Vital Services:** The successful control of mosquitoes can be a technical, ecological, and fiscal challenge. Chatham County Mosquito Control relies on the airport to regulate the area's mosquito population. The airport is used by aircraft that distribute pesticides that help prevent the spread of disease associated with this airborne insect. Applications are of little threat to the environment, and mosquito control is essential to the quality of life for residents and visitors.



**Tourism:** Savannah attracts visitors from all over the world. Travel + Leisure Magazine ranks Savannah as #3 in terms of U.S. cities visited. The city's architecture, history, food, coastal setting, and overall ambiance are major attractors. Visitors to Savannah are heavily weighted, almost 90%, to leisure travel, but the city also attracts many business conferences. Visitors arriving via the airport each year are approaching 1 million. When visitors spend the night in the area, they generate important local revenue from hotel taxes. Savannah excels in special interest tourism activities and continues to see an increase in tourism year after year.

#### THIS DOCUMENT WAS PREPARED BY

Jviation  
900 S Broadway, Suite 350  
Denver, Colorado 80209  
303.524.3030  
www.jviation.com

#### FOR MORE INFORMATION PLEASE CONTACT

Georgia Department of Transportation Aviation Programs  
600 West Peachtree Street NW  
Atlanta, Georgia 30308  
404.631.1990 | dot.ga.gov/IS/AirportAid  
Email: aviationprograms@dot.ga.gov