



Georgia DOT Winter Weather Preparedness

Georgia DOT's Winter Weather Response Plan focuses on proactive and preventive efforts.

Much of the winter weather work plan includes strategies learned from research and peer exchanges with other State DOTs. Many of these initiatives have been recently implemented as a result of this research such as:

- Several contractors have signed agreements and are ready to join GA DOT to address hazardous winter precipitation.
- Our procedures now focus on maintaining two lanes of interstates - not every lane. Second priority is the highest volume state routes. This focus assists the most traveled routes first, keeping them open for emergency travel. Two lane state routes could be closed to traffic until they are safe to use or Cities and Counties can choose to work on those roadways.
- We've added 11 new material locations along interstates to allow for quicker, targeted and continuous response where needed on interstates.
- Our stockpile of materials has been increased statewide to allow for heavier applications of salt and stone through longer events if needed.
- New equipment including snowplows, liquid saddlebag tanks for dump trucks, liquid deicer sprayers and a brine maker are now part of our arsenal.
- A coordination plan with Local Governments is now in place to share information and materials. We are working collaboratively to strategically pool our resources and response. We trained Local Governments and developed a website for sharing information.
- We are coordinating with other state agencies; GEMA and GSP utilizing the Storm Ops Center based on Emergency Situational Response.
- Our outreach efforts have exponentially increased utilizing our existing website, message boards along our transportation network, facebook and twitter.
- Internal process improvements are in place; staggering shifts, adding cell phones to every dump truck and follow vehicle to enhance our real time information sharing.
- Every driver now has a communication device to share real time conditions with their Area and District Storm Operations Center.
- Across the affected parts of the state, nearly all Georgia DOT personnel will be on call.
- Approximately 1,912 Georgia DOT maintenance and construction employees are available for active duty across the state



The Equipment

- Tandem trucks and dump trucks with snowplows attached to the front to push the snow and ice from the roadways.
- Tandem trucks and dump trucks with hopper spreaders or tailgate spreaders attached to the rear to distribute the salt mixture and brine used for de-icing the roads.
- Tandem trucks or dump trucks with *both* salt/rock spreaders and snowplows attached.
- Tractor type motor graders for moving snow.
- Chainsaws for removing trees and branches from the roadway.

NEW TOOLS IN TOOLKIT

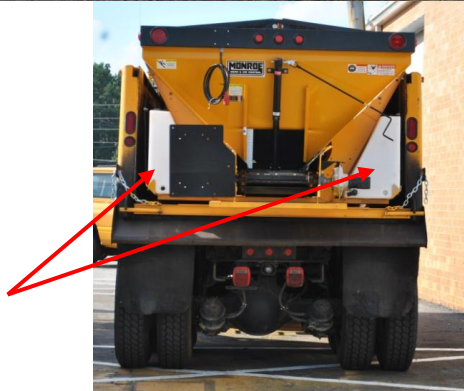
BRINE MAKER AND TANKS – Brine maker creates a liquid form of salt that can be stored for use as needed. New distribution tanks are added to the hopper spreaders that distribute the solid form of salt and stone. The new saddlebag tanks allow an operator to spread the liquid mixture and the solid mixture together or just spread the solid mixture on the roadway using one dump truck. All new spreaders have liquid saddlebag tanks for distribution. Each North Georgia District also has new holding tanks that can store up to 5,000 gallons of liquid salt.

GDOT Forces created the brine maker from spare parts gathered from across the State.

Brine maker



New liquid saddlebag distribution tanks controlled by dump truck driver. Truck can spread salt and stone, brine or all when needed.





Snow and Ice Removal

- Keeping the roads safe for emergency vehicles is our first priority.
- Interstates are cleared first, and then state routes from the most heavily traveled to the least traveled.
- The most common de-icing mixture is a 3:1 ratio of small '89 stone' and sodium chloride (salt). It is effective in breaking up ice and snow until temperatures drop below 25 degrees.
- If temperatures dip below 25 degrees, calcium chloride is added to the stone/salt mixture.
- Salt brine can be used to pre-treat roadways to prevent ice from bonding to the roadway surface.
- The tandem dump trucks mounted with spreaders can carry approximately 8 to 12 tons of the de-icing mixture.
- The Georgia DOT will bring in crews and equipment from other areas of the state to help with a particularly hard-hit area whenever necessary.

General Preparedness

- The Georgia DOT maintains a staging area in most counties. These county maintenance buildings each stockpile salt, fine gravel, fuel and any supplies needed for emergencies.
- The Georgia DOT's Highway Emergency Response Operators (HEROs) will be monitoring traffic along I-85, I-75, I-20 and I-285 in the metro Atlanta area in order to assist motorists with car trouble or to help clear accidents and stalls from the roadway.
- In the metro Atlanta area, the traffic operators at the Transportation Management Center in southeast Atlanta constantly monitor the traffic cameras along the interstates looking for signs that roads are icing up and relay those locations to the maintenance office.
- Communications personnel across the state will be at the Transportation Management Center and the district offices to provide constant updates to the media.
- Communications personnel will be providing updates to the public via Facebook (<http://www.facebook.com/GeorgiaDOT>) and Twitter (<http://twitter.com/gadepoftrans>).
- Citizens may also access roadway conditions at the Department's winter weather web site: (<http://www.dot.ga.gov/winterweather>).
- We monitor all local weather reports on television and radio, in addition to receiving regularly updated weather information from national sources.

Safety Tips

- *Motorists should not pass a DOT dump truck spreading the salt/stone mixture, as stones may get kicked up at their cars and could break windshields. Please follow at least 100 feet behind DOT vehicles.*
- *Motorists need to be mindful of Georgia DOT crews working to clear the snow and ice from interstates and state routes.*
- *SLOW DOWN at least half your normal speed and use a low gear as you drive.*
- *If you come to a traffic signal that is not working, treat it as a four-way stop.*
- *Beware of black ice, especially on bridges and watch for fallen trees or power lines.*



By the Numbers...

Statewide, we have...

- Approximately 1,912 employees on call covering 42,500
- Approximately 36,586 tons of gravel
- 26,203 tons of rock salt.
- Approximately 554 pieces of snow removal equipment

In District 1, Northeast Georgia, we have...

- 342 employees on call covering 5,667 lane miles
- 136 pieces of snow removal equipment
- 6,572 tons of salt
- 8,000 tons of gravel
- Contact Teri Pope – (770) 718-3924

In District 2, East Central Georgia, we have...

- 325 employees on call covering 7,730 lane miles
- 105 pieces of snow removal equipment
- 2,851 tons of salt
- 7,667 tons of gravel
- Contact Cissy McNure – (478) 552-4656

In District 3, West Central Georgia, we have...

- 342 employees on call covering 3,600 lane miles
- 5,085 tons of salt
- 3,182 tons of stone
- 57 pieces of snow removal equipment
- Contact: Kimberly Larson – (706) 741-3439

In District 4, Southwest Georgia, we have...

- 52 employees on call covering 8,922 lane miles
- 230 tons of salt
- 264 tons of stone
- 12 pieces of snow removal equipment
- Contact: David Spear – (404) 631-1825

FACTSHEET

Visit us on Facebook or Twitter.



In District 5, Southeast Georgia, we have...

- 300 employees on call covering 6,882 lane miles
- 200 tons of salt
- 4,123 tons of gravel
- 6 pieces of snow removal equipment
- Contact: Jill Nagel – (912) 530-4075

In District 6, Northwest Georgia, we have...

- 270 employees on call covering 5,117 lane miles
- 4,885 tons of salt
- 6,370 tons of gravel
- 120 pieces of snow removal equipment
- Contact: Mohamed Arafa – (770) 359-9523

In District 7, Metro Atlanta, we have...

- 281 employees on call covering 4,582 lane miles
- 6,380 tons of salt
- 6,980 tons of gravel
- 118 pieces of snow removal equipment
- Contact Mark McKinnon – (404) 631-1832