

2013 GDOT DBE Supportive Services Blueprint for Success

Sept 10, 2013



EPA Fuel Economy Estimates

These estimates reflect new EPA methods beginning with 2008 models.

CITY MPG

30

Expected range
for most drivers
24 to 36 MPG

HIGHWAY MPG

38

Expected range
for most drivers
31 to 45 MPG

Estimated
Annual Fuel Cost

\$1,454

based on 15,000 miles
at \$3.20 per gallon

Combined Fuel Economy

This vehicle

33

13  32

ALL MINICOMPACT CARS

Your actual
mileage will vary
depending on how you
drive and maintain
your vehicle.

**Our vehicles are more
efficient, reducing gas tax
revenue and we are not
driving as much**

Motor Fuel Tax Rate

Federal Tax – 18.4 ¢ per gallon on gasoline (more for diesel)

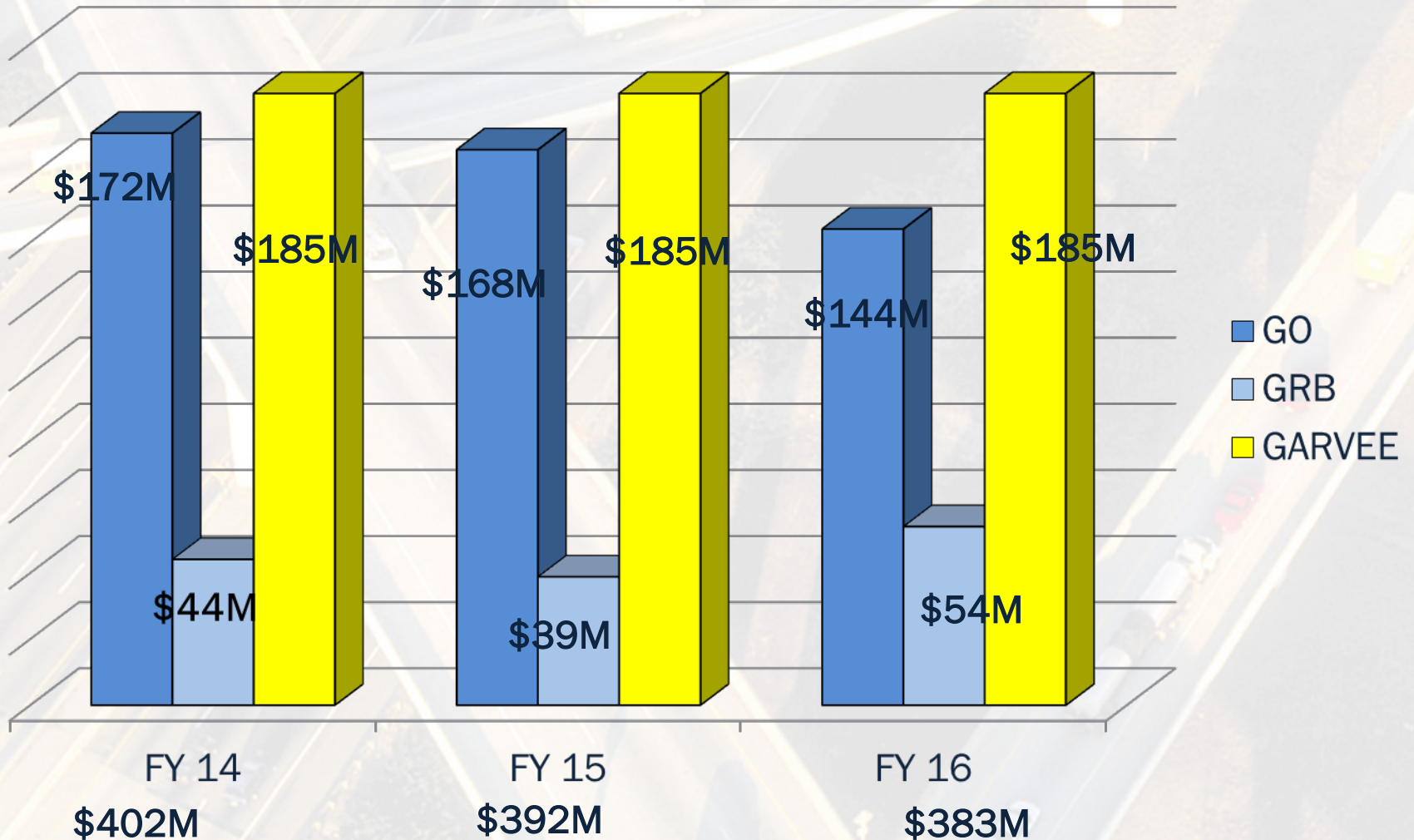
State Tax – Currently 17.0 ¢ per gallon for gasoline for GDOT

- 7.5 ¢ per gallon (excise) +
- 4% Sales & Use Tax (prepaid)
 - 3% to GDOT (currently 9.5¢ per gallon)
 - 1% to State General Funds (currently 3.1¢ per gallon)
 - Also must consider local sales tax on gasoline (1%-3%) or (3.1 to 9.3¢)
 - Also must consider 0.05 cents GUST fee.
 - Example – for County with 7% Sales Tax, the total tax on gas is 47.5 cents per gallon of which 35.4 cents goes to transportation.

State Motor Fuel Collections



GDOT Debt Service Payments



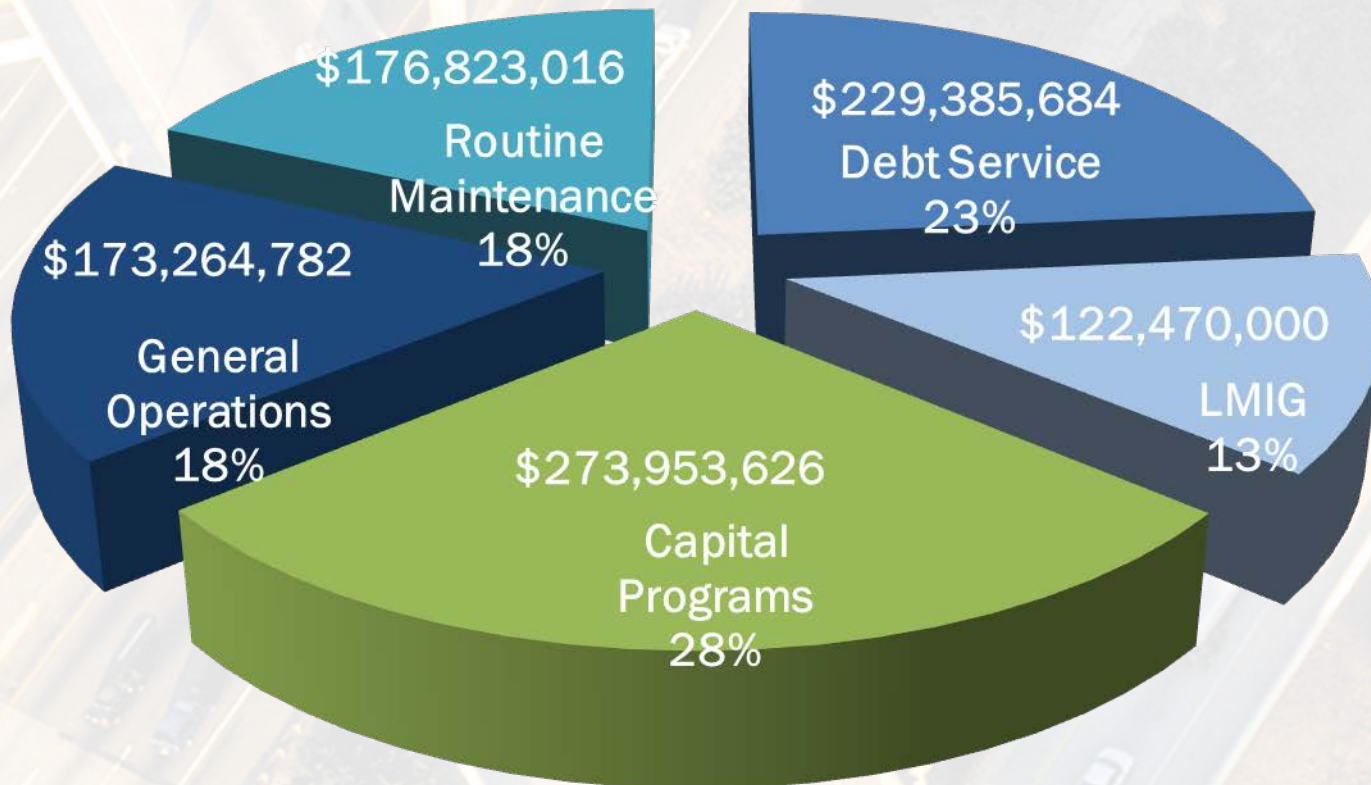
**GO Bond Debt Service appropriated directly GSFIC

***GRB and GARVEE Debt Service appropriated to the GDOT Payments to SRTA program

Debt Service based on information provided by GSFIC and SRTA

FY14 State Motor Fuel Budget

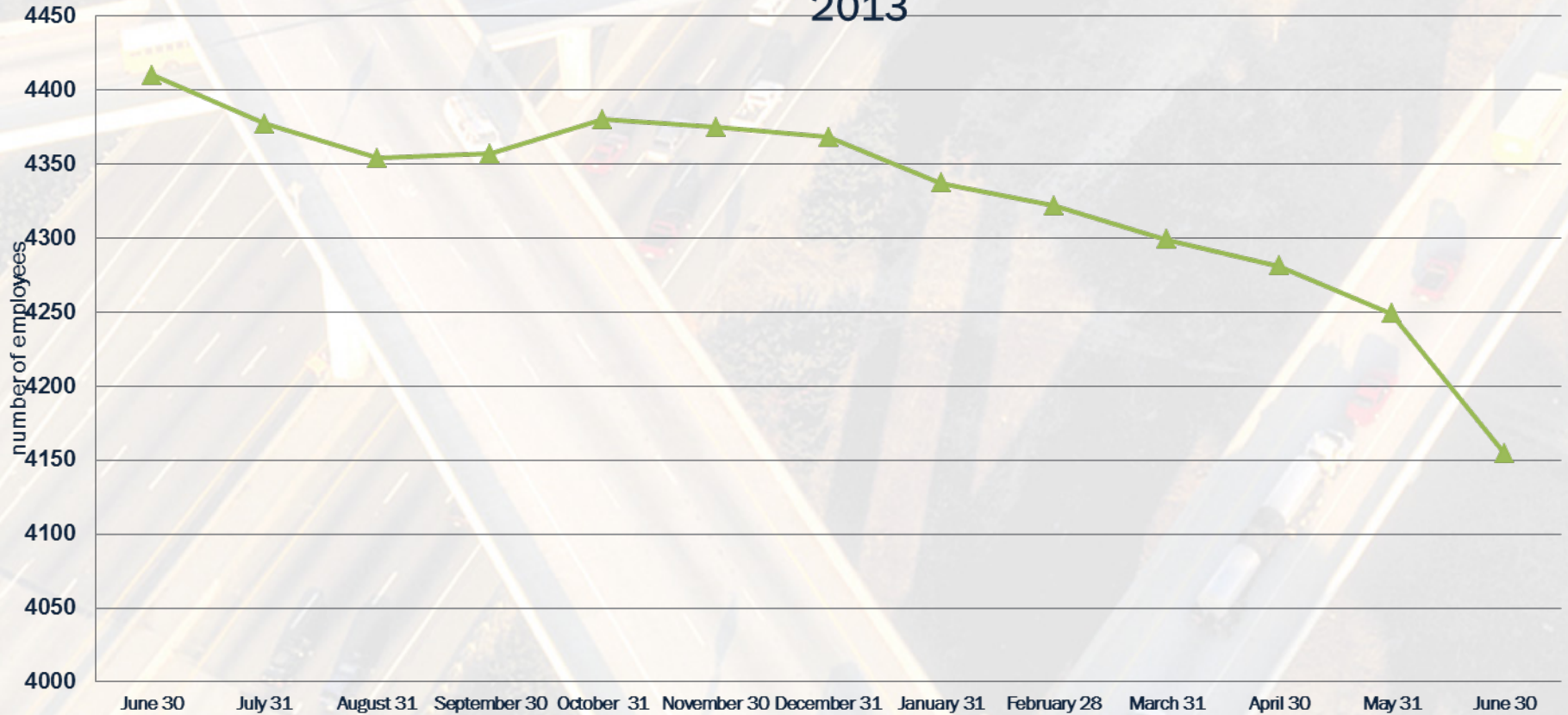
Total State Motor Fuel Budget: \$975,897,108



LMIG- Local Maintenance and Improvement Grants Program

Employment

Filled Positions June 2012 - June 2013



A photograph of a misty landscape at sunrise. A dirt road winds through a field of green grass and bushes. In the background, there is a dense line of trees under a soft, hazy sky. The overall atmosphere is calm and serene.

What Happened on
August 1, 2012?

Sunrise August 1, 2012

Perfect Storm:

Historically Poor Economy

Lack of Trust in all forms of Government

First Regional Referenda for Georgia

Complex Issue and Complex Bill

Large, Diverse Regions

Became Partisan

Distaste for Tax Increase

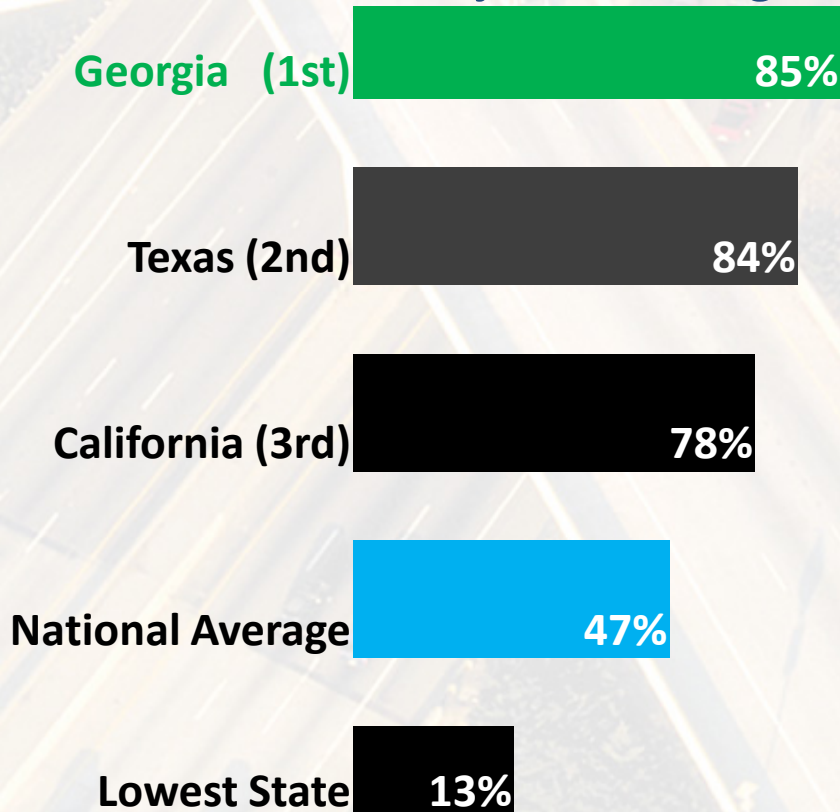
While the money may not be there, GDOT is trying its best to meet the needs while maintaining a reduced workforce

GDOT Construction Delivery Rates

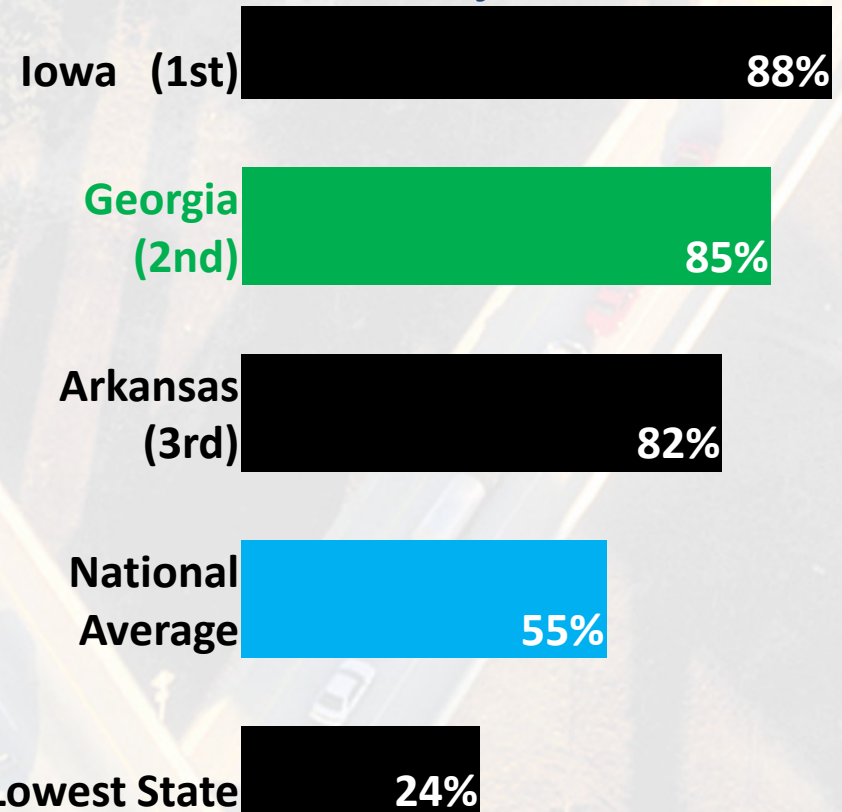
In FY 11, a record 99% of all let projects completed on-budget.

NCHRP Report 20-24(37)A(01), 2001-2010, 39 states

Percent of CST Projects on Budget



Percent of CST Projects on Time



Other Good Efforts GDOT is making

PEW Report – GDOT is one of 13 state DOTs that has reporting measurements to determine outcomes.

Fatal Accidents are down in both FY 11, FY 12 and FY 13

Just rolled out new Successful LMIG Program

Other Good Efforts GDOT is making

LTAP has sponsored 79 classes statewide for local government training.

First P3 Project upcoming on I-75 Corridor

Other Managed Lane Projects include I-75 south in Henry County and I-85 north in Gwinnett County

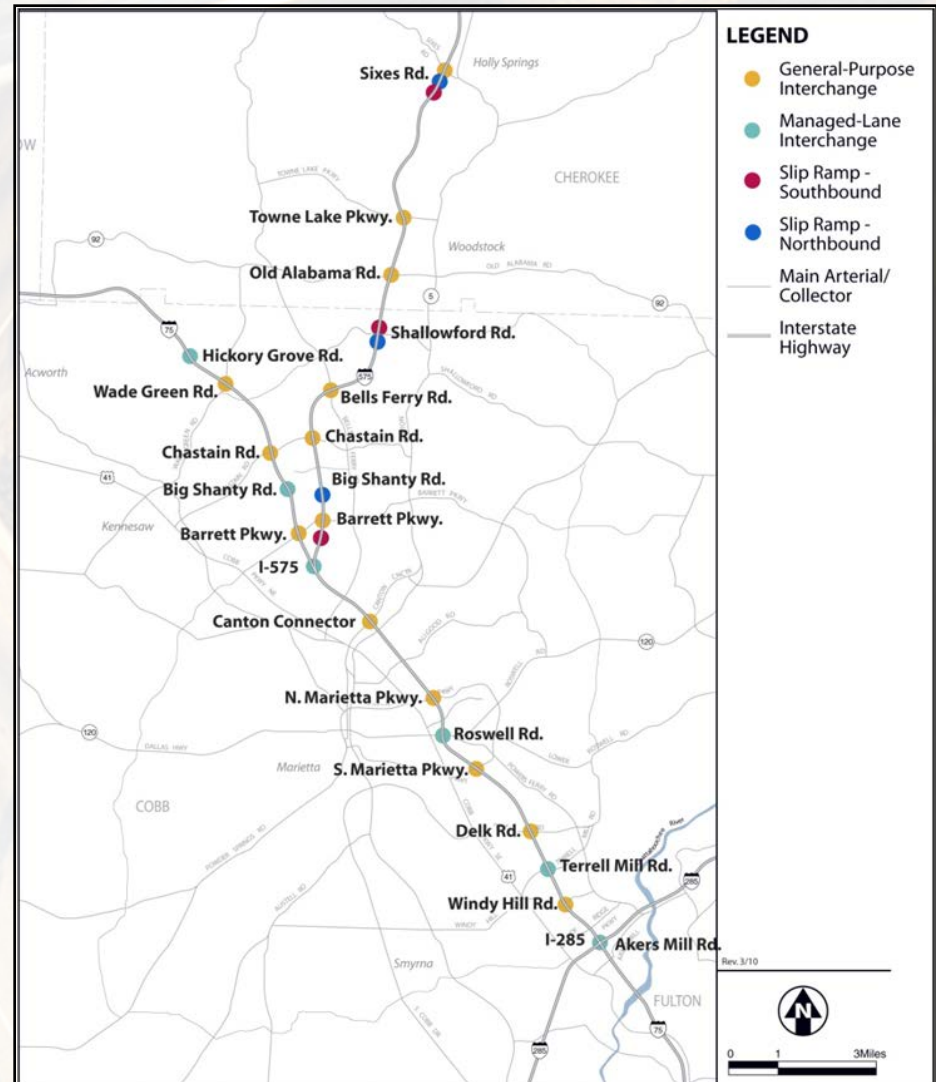
Quick Response Projects all over state

Small Business Program

- **Increasing opportunities**
- **Helps meet part of our Race Neutral Goals**
- **Small Business Research Study**

Northwest Corridor Project Location and Overview

- n Project length of 29.7 miles.
Reversible, barrier-separated managed lanes. Southbound operations in AM and northbound in PM.
- n 13 existing interchanges
- n 4 New I-75 Access Points
 - Hickory Grove Road;
 - Big Shanty Road;
 - Roswell Road;
 - Terrell Mill Road.
- n 3 New slip ramps to/from I-575
 - s/o Sixes Road;
 - s/o Alabama Road;
 - at Barrett Parkway.



Northwest Corridor Project Procurement

- Apparent Best Value Proposer Announced by GDOT on July 23 consisting of the following Team:
 - Northwest Express Road Builders
 - Archer Western Contractors, LLC
 - The Hubbard Construction Company
 - Parsons Transportation Group Inc.
- Bid Amount for the Design Build Contract: \$599 million
- Total Project Estimate: \$840 million
 - Design Build Contract
 - Agency Costs and Right of Way
 - Prior Expenditures on Project
 - Repayment of Developer Financing
- Anticipated Contract Signing by State Road and Tollway Authority (SRTA) on November 4, 2013
- Design-Build Project expected to last 4.5 years
- GDOT will act as Project Manager for SRTA

DBE Participation

- GDOT is requiring the Developer to take a proactive approach to ensure adequate involvement by DBE resources
- DBE goal is fourteen percent (14%) of the overall project design and construction costs
- Developer will be required to exercise good faith efforts to achieve the DBE participation goal



Types of DBE Work Available

Lead Developer will require help in both design and construction activities. Specifically, the Team should meet GDOT pre-qualification for the following categories:

- 3.03 Multi-Lane Widening and Reconstruction
- 3.05 Design of Urban Expressway and Interstate
- 3.07 Traffic Operations Design
- 3.08 Landscape Architecture Design (x)
- 3.09 Traffic Control Systems Analysis, Design and Implementation (x)
- 3.10 Utility Coordination
- 3.12 Hydraulic & Hydrological Studies (Roadway)
- 3.15 Highway & Outdoor Lighting (x)
- 4.01 Minor Bridges Design
- 4.02 Major Bridges Design
- 4.04 Hydraulic & Hydrological Studies (Bridges)
- 4.05 Bridge Inspection
- 5.01 Land Surveying (x)
- 5.02 Engineering Surveying (x)
- 5.04 Aerial Photography (x)
- 5.05 Photogrammetry (x)
- 5.08 Overhead/Subsurface Utility Engineering (SUE) (x)
- 6.01a Soil Surveys Studies
- 6.02 Bridge Foundation Studies
- 6.03 Hydraulic & Hydrological Studies (Soils & Foundation)
- 6.04a Laboratory Testing of Roadway Construction Materials
- 6.04b Field Testing of Roadway Construction Materials
- 6.05 Hazard Waste Site Assessment Studies
- 8.01 Construction Engineering and Supervision
- 9.01 Erosion, Sedimentation, and Pollution Control Plan
- 9.02 Rainfall and Runoff Reporting (x)
- 9.03 Field Inspection for Erosion Control

Team members in the area classes marked with an (x) below are not required to be identified in the Proposal.

Developer's Commitment

- ✓ Hold meet-and-greet gatherings to continue to generate interest in the project by the subcontracting community
- ✓ Have a pre-bid qualification process to identify the capabilities and qualifications of DBE firms and other subcontractors
- ✓ Ensure procurement packages are structured to maximize DBE participation
- ✓ Ensuring the inclusion of DBE firms in all solicitations for products or services they can provide
- ✓ Providing extra aid and support by sending DBE's requested copies of drawings, specifications and quantities that are not readily available to these organizations

Monitoring DBE Involvement

- Major Projects* are required to develop procedures for regular (typically monthly) reporting of DBE involvement
- Developer is required to adhere to GDOT's DBE policy and program
- Developer is required to submit a DBE Performance Plan to ensure the DBE goal is real and substantial, performed by viable DBE firms, is in accordance with applicable laws and regulations, and meets all contract requirements
- GDOT and Developer's Project Management Plan will establish reporting procedures as well as review and audit procedures for monitoring DBE compliance over the life of the project

* FHWA defines **Major Projects** as those costing \$500 million or more and receiving federal financial assistance

How do DBE's Prepare?

- Obtain prequalification in applicable areas
- Research project and procurement information available on website
- Understand procurement schedule and key milestones
- Reach out to shortlisted firms to understand need for services



Schedule

Activity	Date	
GDOT Selection of Best Value Proposal	July	2013
State Transportation Board Approval of Contract	September	2013
Execution of Contract by State Road & Tollway Authority & Developer	November	2013
Issuance of Notice to Proceed & Design Phase Begins	November	2013
Construction Phase to Begin	August	2014
Project Open to Traffic	March	2018

I-75/575 Contact Information

For procurement related questions, please contact:

Chip Meeks, P3 Administrator
Georgia Department of Transportation
One Georgia Center
600 West Peachtree Street, 19th Floor
Atlanta, Georgia 30308

Telephone: (404) 631-1300

Project Email: GeorgiaP3NWC@dot.ga.gov

Procurement Website:

www.dot.ga.gov/doingbusiness/p3/projects/NWC/Pages/default.aspx

Northwest Corridor Site: www.nwcproject.com

In Summary...

Failure is not an option!

