

# Carroll County Long Range Transportation Plan

Stakeholder Meeting #2  
October 23, 2013



# AGENDA

- Introductions
- Project Purpose and Overview
- Existing & Future Conditions
- Draft Potential Improvements
- Project Prioritization
- Next Steps

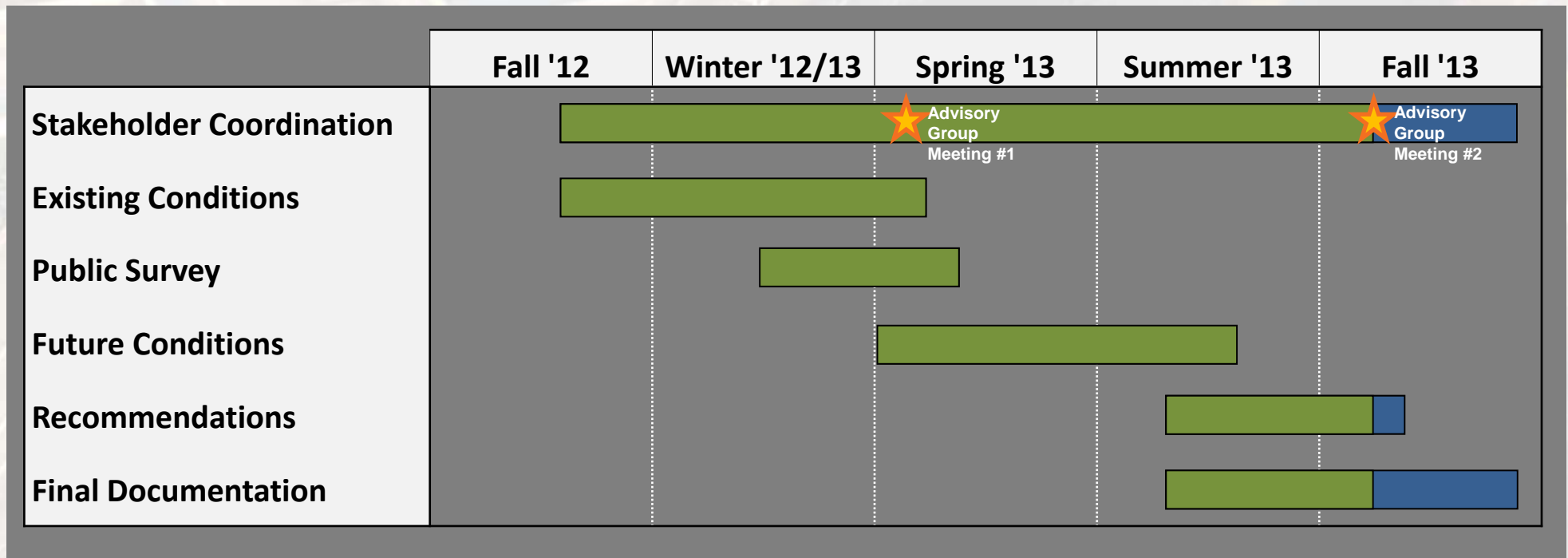
# Project Purpose and Overview




# WHY DEVELOP A TRANSPORTATION PLAN?

- Ensure that the County is Able to Meet the Mobility Needs of Residents and Businesses
- Ensure Transportation Priorities Match Community Priorities
- Coordinate with Other Planning Efforts
- Develop a Listing of Tiered Transportation Projects
- Early Identification of Funding Issues and Opportunities

# SCHEDULE



 - Advisory Group Meeting

# OUTREACH / COORDINATION

- Stakeholder Advisory Group
- Public Survey
- Website ([www.dot.ga.gov/carrollcountystudy](http://www.dot.ga.gov/carrollcountystudy))



# RECAP OF MEETING #1

- Study Goals and Objectives
- Data Collection
- Existing Conditions
  - Demographics
  - Transportation System Characteristics
- Stakeholder Input
  - Issues and Opportunities

# TRANSPORTATION PLAN GOALS

Study Goals	Local	State	National
Improve <b>safety, accessibility</b> and <b>mobility</b> options for people and goods movement	✓	✓	
Promote and protect <b>quality of life</b> by integrating local planned growth, land use patterns and economic development patterns with transportation analysis and planning	✓	✓	
Emphasize the efficient, operation, and <b>preservation</b> of the existing transportation system while promoting environmental <b>sustainability</b>	✓	✓	✓
Accommodate users without access to automobiles and promote health and quality of life by providing a range of <b>mobility options</b>	✓	✓	



# Existing & Future Conditions



# DATA COLLECTION OVERVIEW

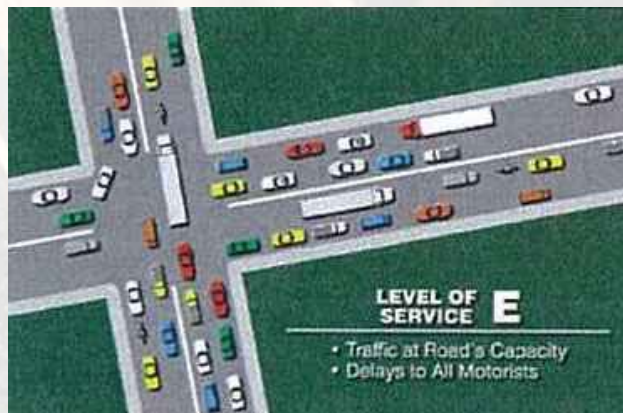
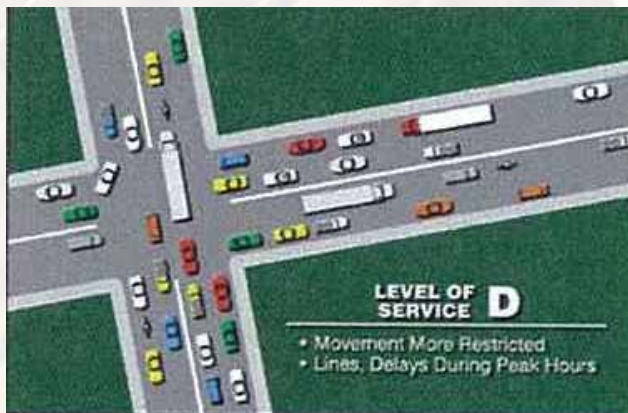
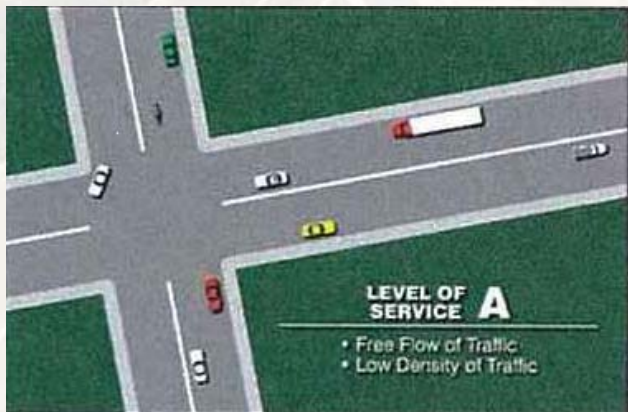
- Background Information and Studies
  - Transportation and Land Use Planning Documents
- Multi-Modal
  - Transit
  - Bicycle and Pedestrian
  - Aviation
- Crash History
- Bridge Inventory
- Rail and Freight Movement
- Data to Support Travel Demand Model

# TRAVEL DEMAND MODEL

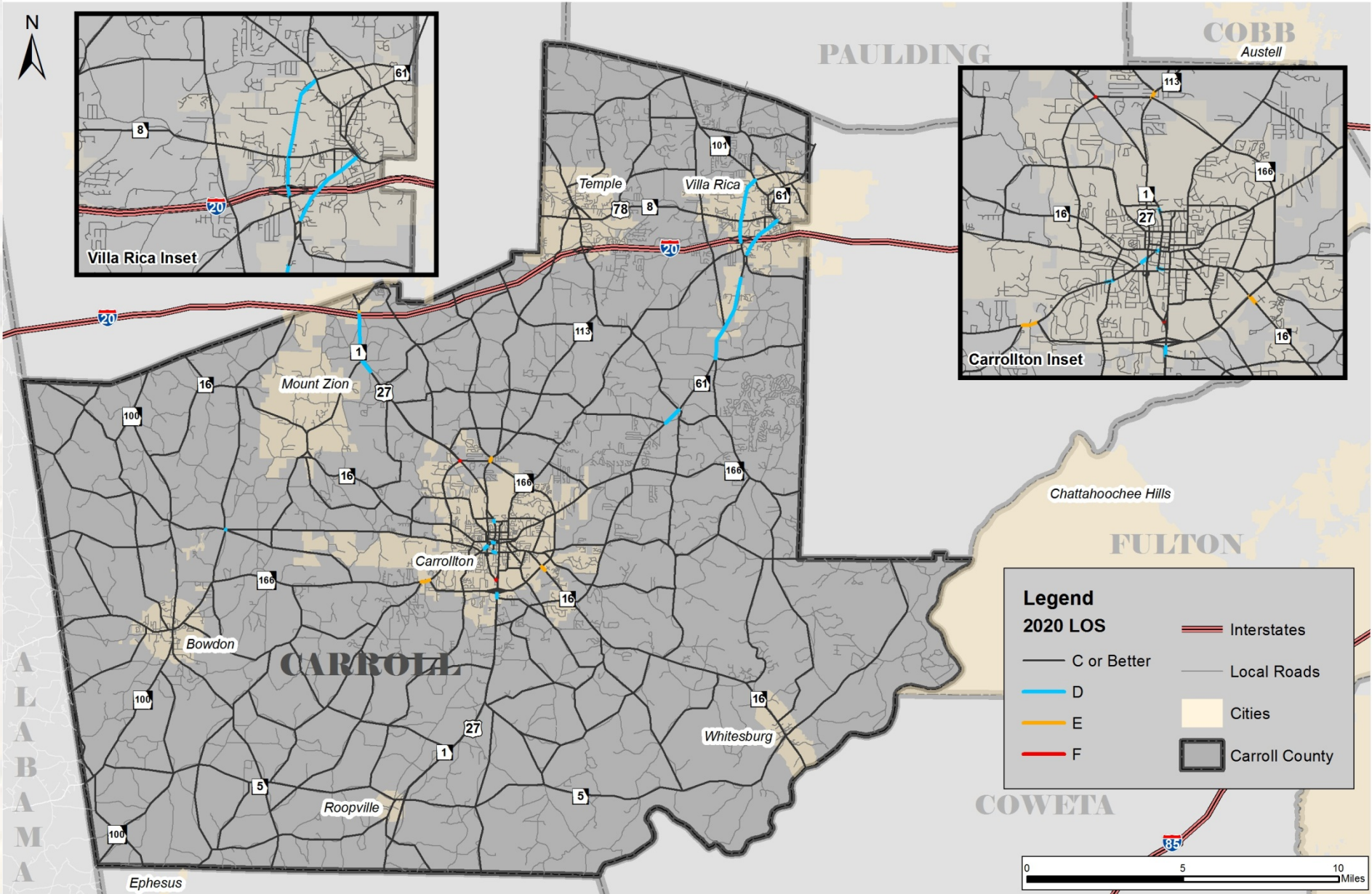
- Model development is based on:
  - 2010 traffic counts
  - Census data
  - Employment information
  - School enrollment
  - Socioeconomic forecasts
- Utilized results to identify potential improvements based on future needs

# LEVEL OF SERVICE ASSESSMENT

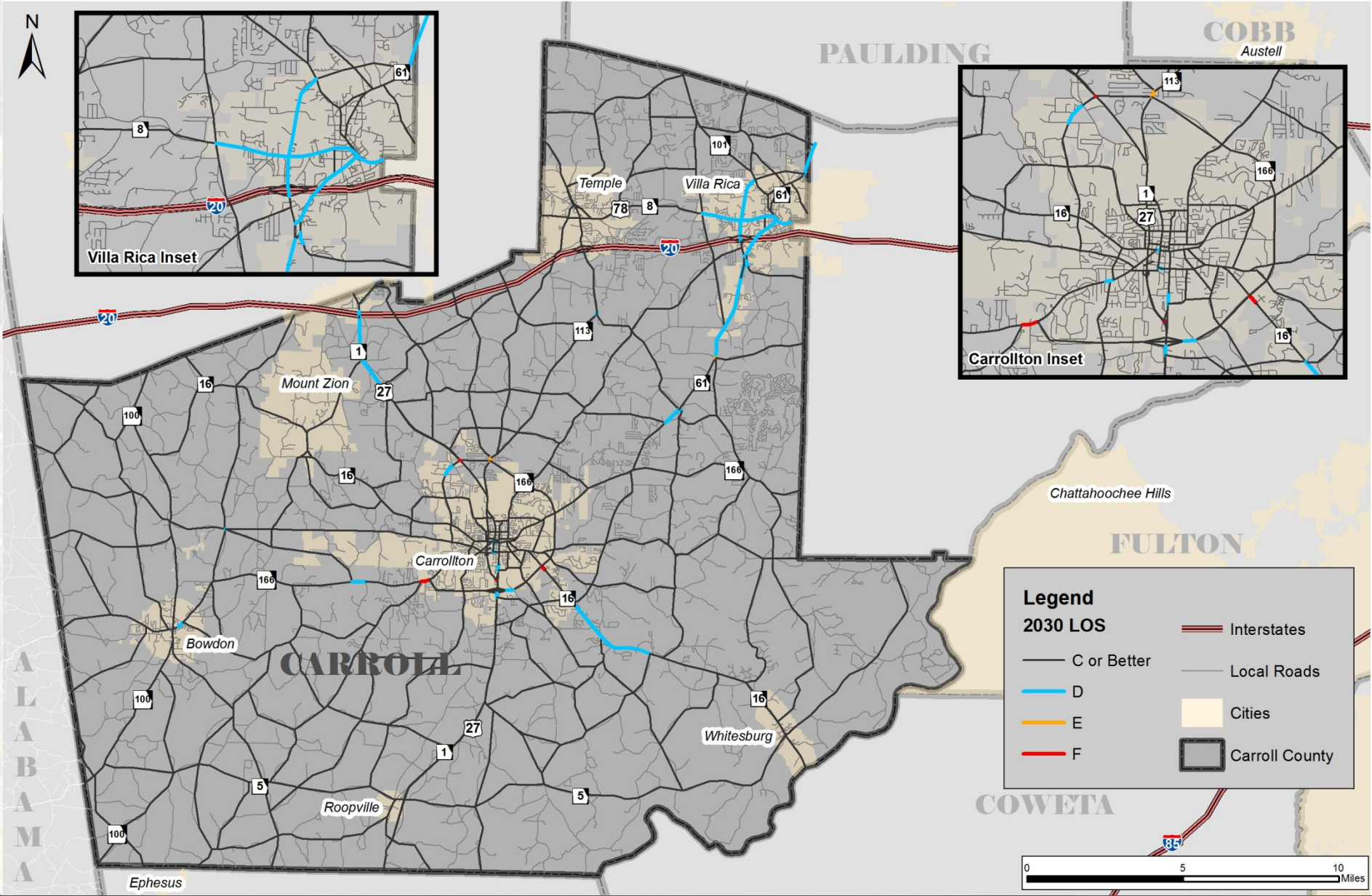
- Level of Service (LOS)
  - Qualitative Measure of Traffic Flow Used to Describe Operating Conditions from the Perspective of Travelers



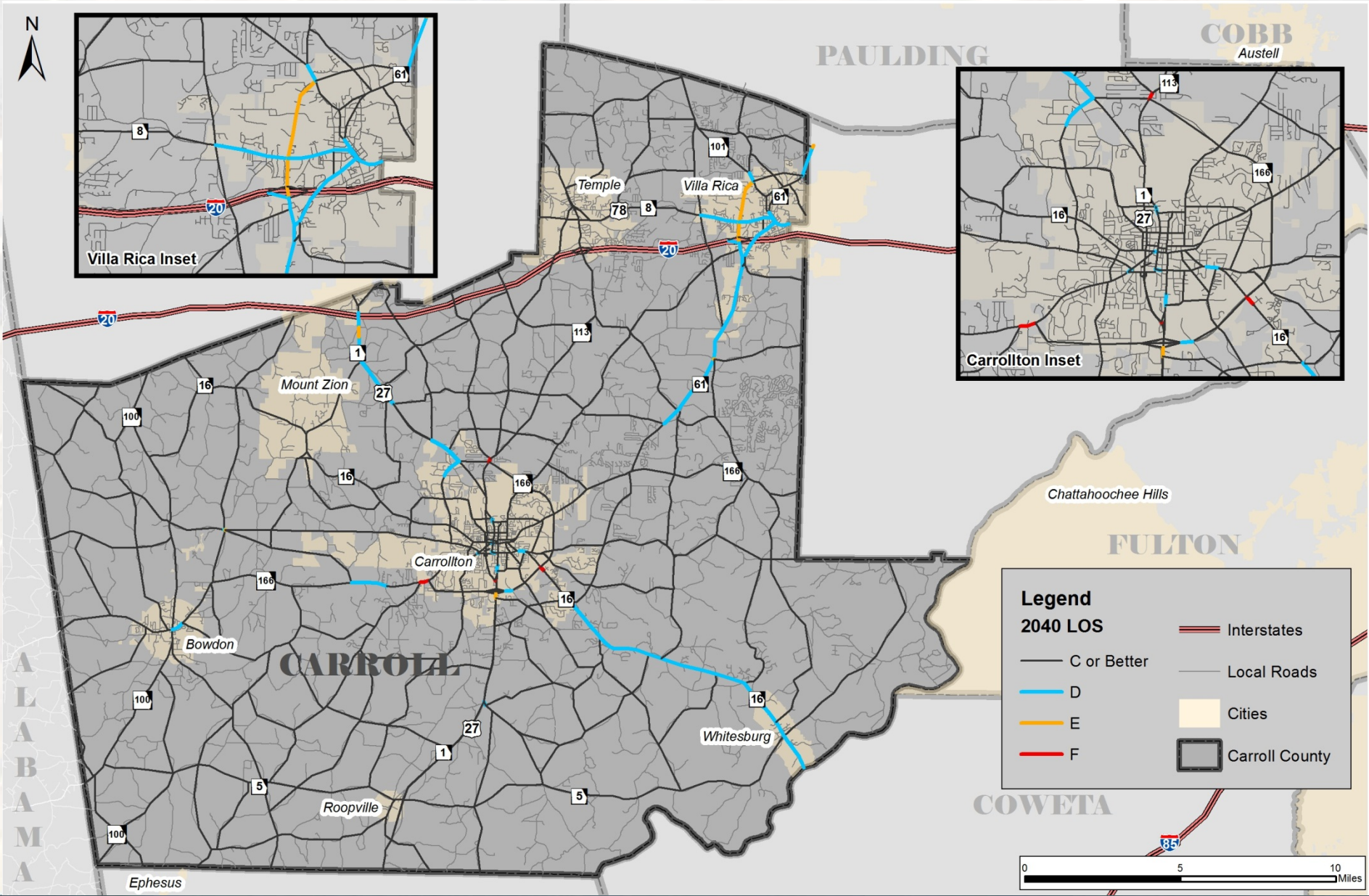
# 2020 LEVEL OF SERVICE



# 2030 LEVEL OF SERVICE




# 2040 LEVEL OF SERVICE



# PUBLIC SURVEYS

- 21 question survey
  - Commute patterns
  - Transportation improvement priorities
  - Transportation Issues
    - Operations
    - Safety
    - Trucks
    - Road conditions
    - Bicycle & pedestrian
    - Transit
- 146 surveys completed

 **PUBLIC SURVEY**  
**CARROLL COUNTY LONG RANGE TRANSPORTATION PLAN**  
WWW.DOT.GA.GOV/CARROLLCOUNTYSTUDY

**BACKGROUND** The Georgia Department of Transportation (GDOT) is performing a Long Range Transportation Plan (LRTP) for Carroll County, Georgia. The purpose of this study is to determine the current and future transportation needs for the county and to develop projects that address identified needs and promote economic vitality and quality of life. Technical analyses will be performed to assess existing conditions of the transportation network. Future conditions will also be assessed based upon projected economic and population growth. Based upon the needs identified through this process and the goals for the study area, a range of multimodal transportation improvements will be developed, which best meet the needs of the county.

**WE WANT TO HEAR FROM YOU!** In order to best understand the needs of the County and its municipalities, it is important to gain input from those who are most familiar with potential issues and opportunities. Therefore, the following survey is being used to collect information which, in addition to technical analyses, will inform the assessment of transportation needs. Please take a minute to fill out the following survey to help guide the future of transportation in Carroll County. A map of Carroll County is included for your reference. Please send completed forms back via mail (Attn: Steve Walker, Office of Planning, 600 West Peachtree NW Atlanta, GA 30308) or email ([carrollcountycoordinator@dot.ga.gov](mailto:carrollcountycoordinator@dot.ga.gov)) by May 10<sup>th</sup>. If you would prefer to fill out the form online, or would like additional information about the study, please visit our website at [www.dot.ga.gov/carrollcountystudy](http://www.dot.ga.gov/carrollcountystudy).

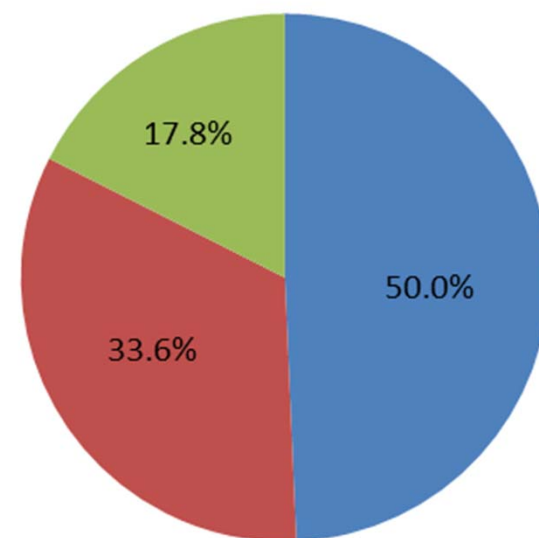
1. What is your 5 digit postal zip code? \_\_\_\_\_
2. Please select the category that best describes your daily travel for work.  
 I commute to work within the County  I do not commute to work outside of my home.  
 I commute outside of the County to work
3. If you do commute to work, in which City/area do you work? \_\_\_\_\_
4. What do you see as the three greatest transportation issues or concerns for Carroll County?  
 Safety  Need for Sidewalk/Pedestrian Options  
 Traffic Congestion  Need for bicycle options  
 Need for Transit Options  Other (please define) \_\_\_\_\_
5. What roads within Carroll County are of most concern to you? Why?  
\_\_\_\_\_  
\_\_\_\_\_
6. Within the County, have you experienced traffic backup on roads or at intersections?  Yes  No Location(s): \_\_\_\_\_



# PUBLIC SURVEYS

- If you commute to work, in which city/area do you work?
  - Carrollton
  - Villa Rica
  - Atlanta
  - Douglasville

## Commuter Patterns

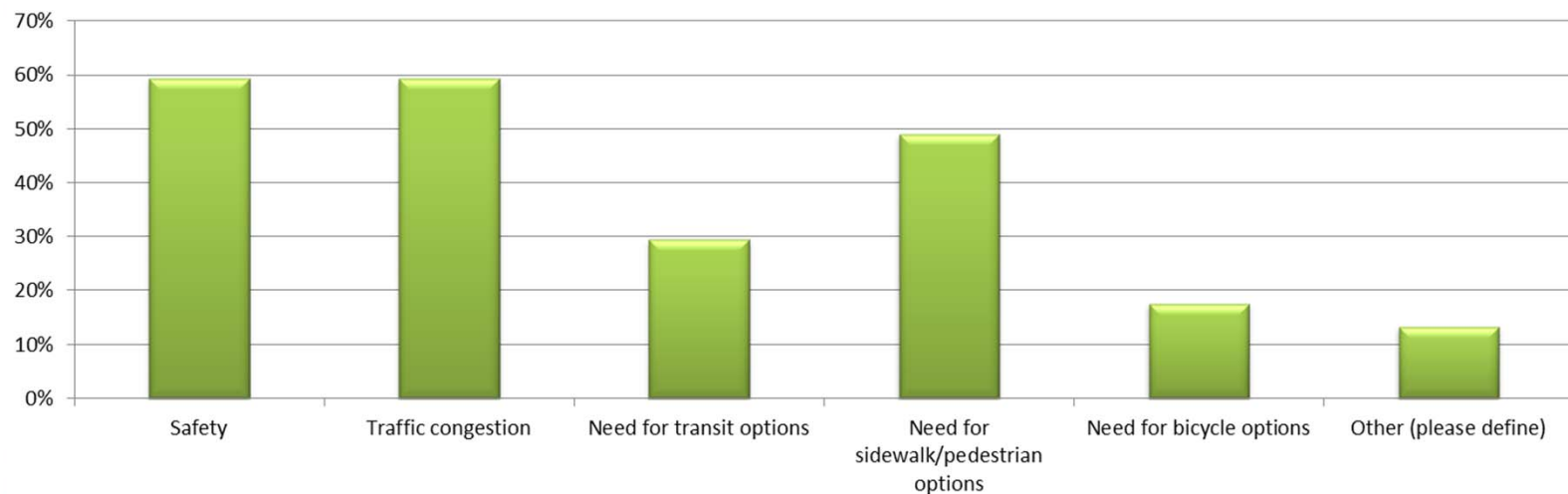


- I commute to work within the County
- I commute outside of the County to work
- I do not commute to work outside of my home

# PUBLIC SURVEYS

- What roads are of most concern to you?
  - US 27 (congestion and traffic signals)
  - SR 61 (congestion and high speed)
  - SR 101 (congestion, crashes)
  - SR 113 (congestion)

What do you see as the three highest transportation improvement priorities for Carroll County?



# Draft Potential Improvements



# TYPES OF IMPROVEMENT ALTERNATIVES

What are the right type of improvements in Carroll County?

- Maintain and manage current facilities
- Operational / safety improvements
- Diversify modes
- Expand existing facilities
- New facilities

# DEVELOPMENT OF STRATEGIES



# POTENTIAL ROADWAY IMPROVEMENTS

## ROADWAY CAPACITY

- Widening / New Construction
  - US 27 from Central Rd to Dixie St (\$16.4 M)
  - SR 166 from Burwell Rd to 4-lane (\$38.9 M)
  - Villa Rica Bypass from SR 61 to SR 101 (\$10.8 M)
  - SR 61 Connector from SR 61 to Shoreline Pkwy (\$8.6 M)
- Shoulder Upgrade
  - SR 16 from Buncombe-Waco Rd to Beulah Church Rd (\$8.6 M)

# POTENTIAL ROADWAY IMPROVEMENTS ACCESS MANAGEMENT / PASSING LANES

- SR 61 from SR 166 to SR 101
- US 78 from SR 101 to Villa Rica
- US 27 from Linden Rd to SR 1
- SR 16 from S of Whitesburg to Oak Mountain Rd

# POTENTIAL ROADWAY IMPROVEMENTS

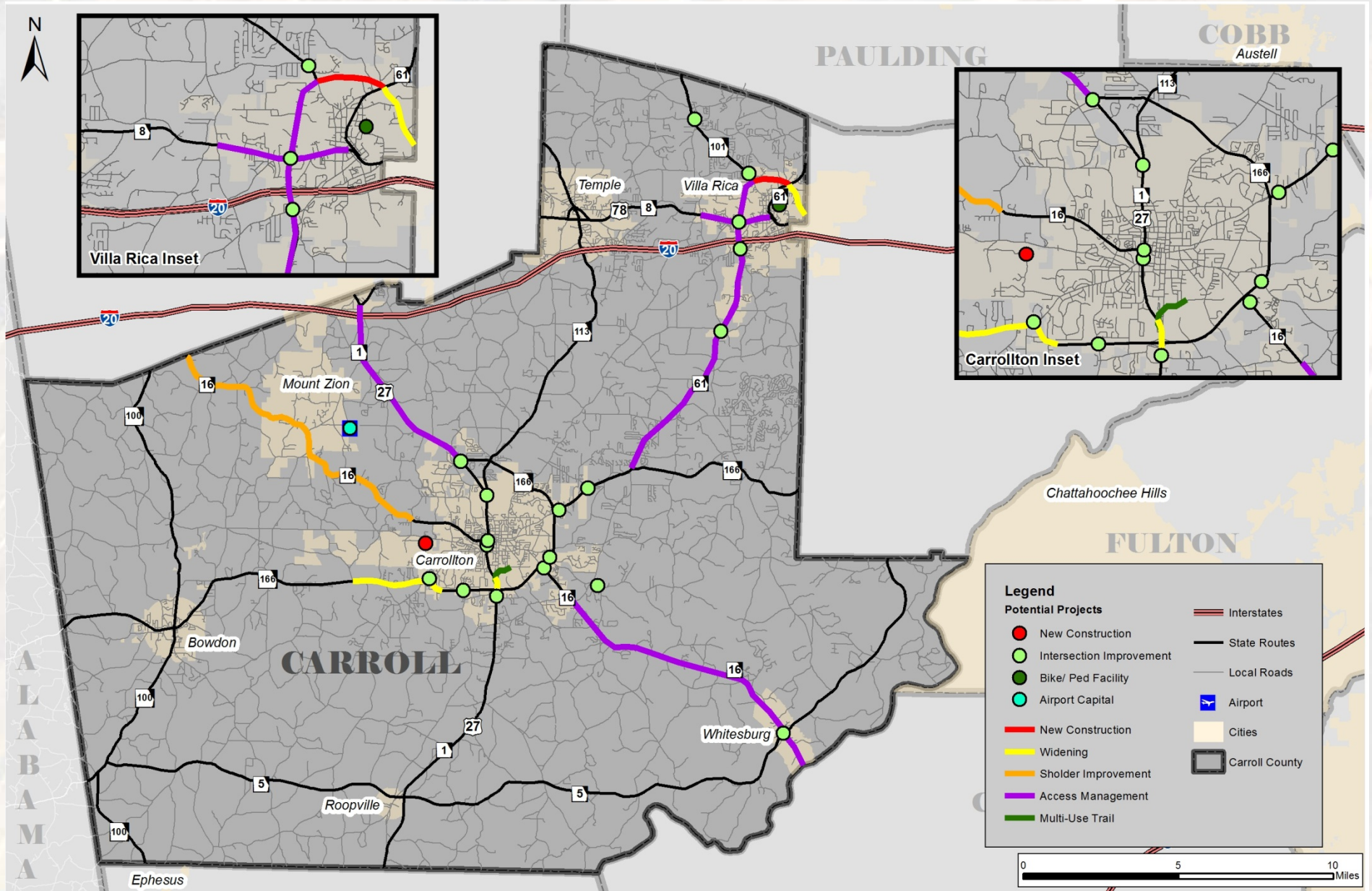
## INTERSECTION

Location	Source
SR 166 at Hays Mill Rd*	GDOT
US 27 / SR 1 / Park St at SR 166 / Maple St	Safety Analysis
US 27 / SR 1 / Park St at SR 16 / Alabama St*	GDOT/Safety Analysis
US 27 / SR 1 at Linda Lane	Safety Analysis
US 27 at SR 113	Public Input & Safety Analysis
SR 1 at Cottage Hill Rd / Central High Rd	Safety Analysis
SR 5 at US 27 Alt*	GDOT
SR 8 at SR 61	Safety Analysis
SR 16 at SR 166*	GDOT/Safety Analysis
SR 61 at North Hickory Level Rd	Safety Analysis
SR 101 at Tumlin Lake Rd (Villa Rica Middle School)	GDOT/Public Input
SR 101 at Harlan Lane Rd	Public Input
SR 166 at Old Airport Rd	Safety Analysis
SR 166 at Somerset Pl	Safety Analysis
SR 166 at Maple St / SR 166	Safety Analysis
Old Newnan Rd at Cross Plains Rd	Public Input
Old Newnan Rd at SR 166 Bypass	Public Input & Safety Analysis

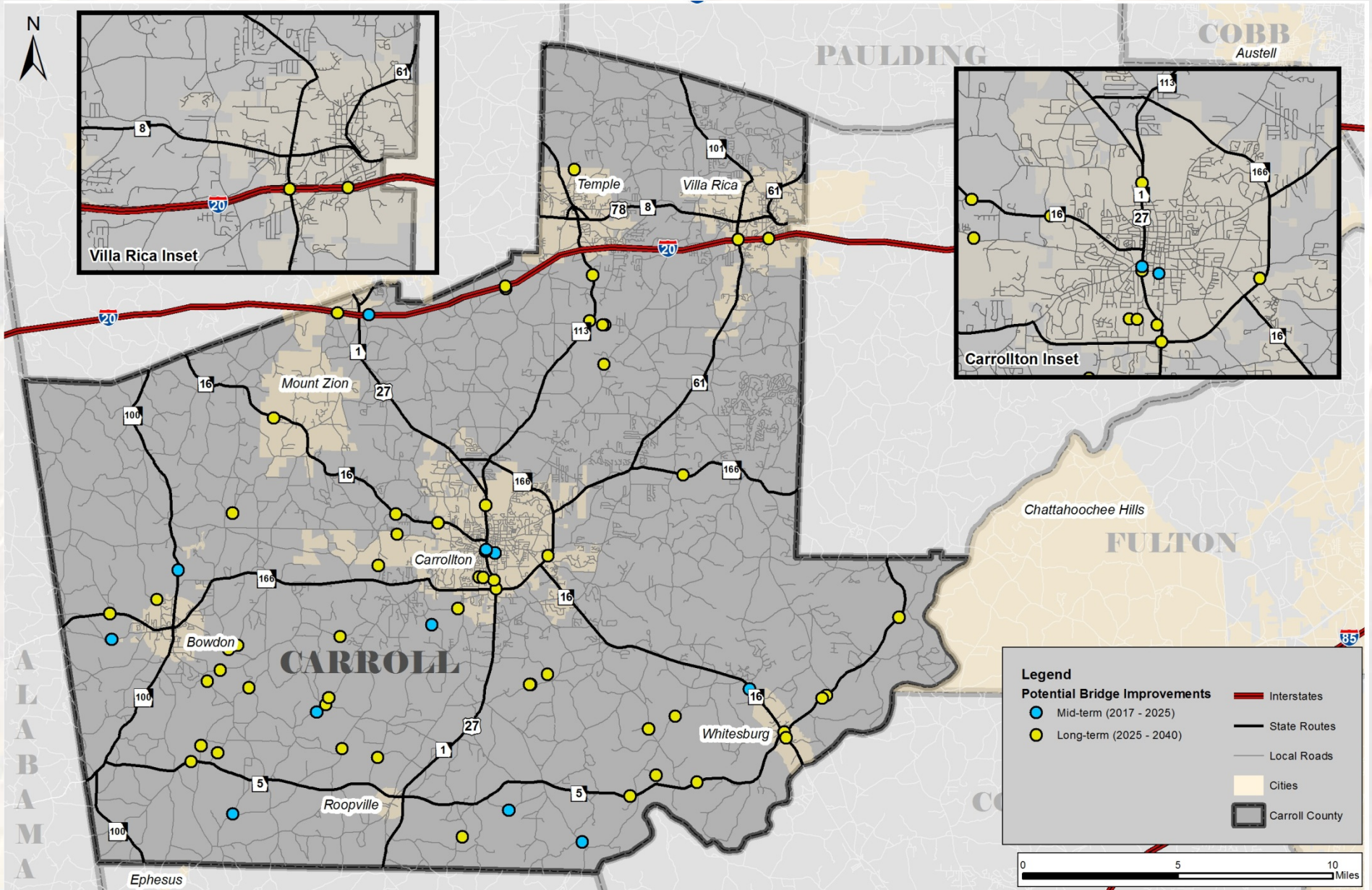
\* - existing GDOT Projects



# POTENTIAL ROADWAY IMPROVEMENTS



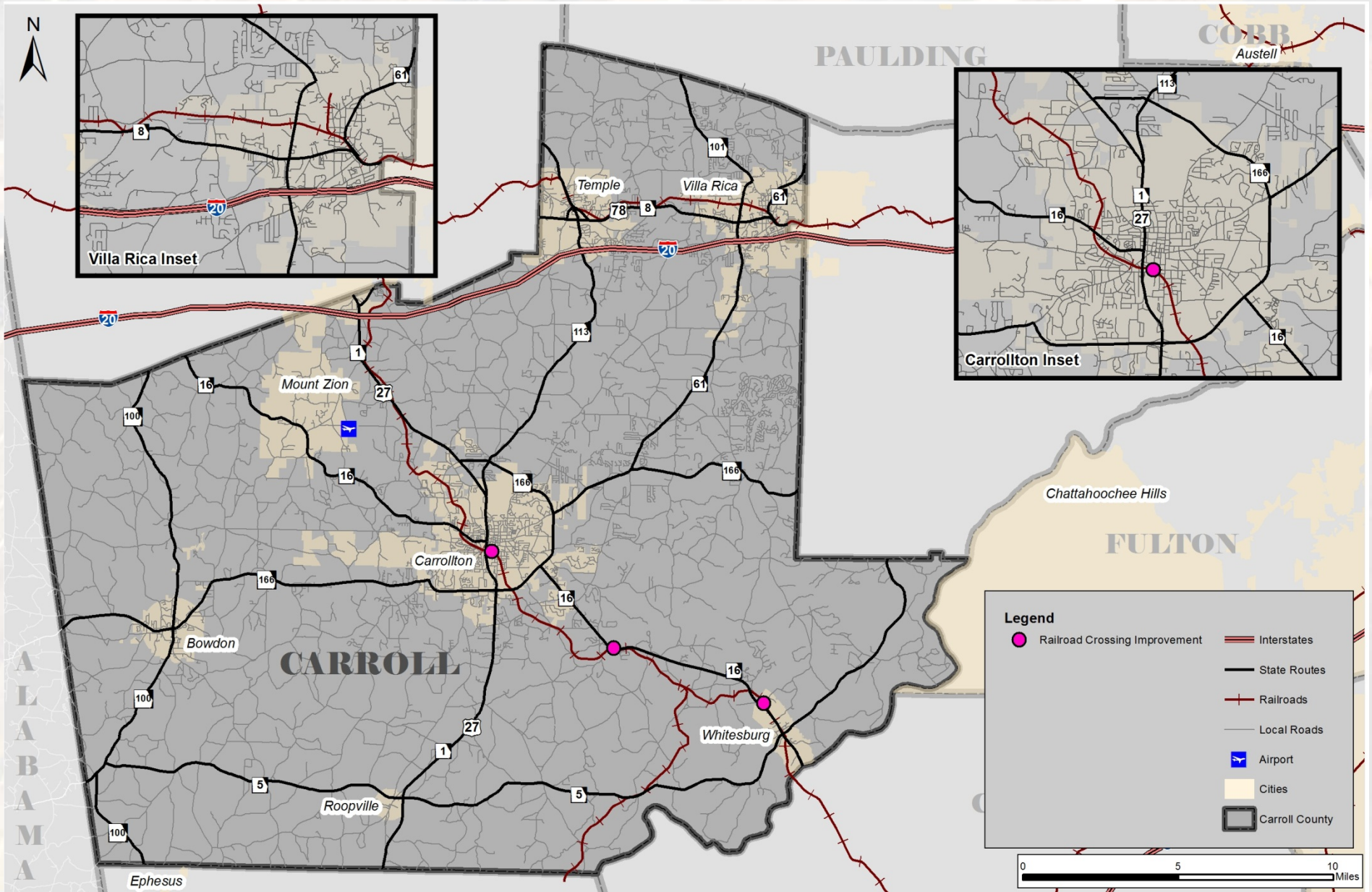
# POTENTIAL BRIDGE IMPROVEMENTS



# POTENTIAL RAIL CROSSING IMPROVEMENTS

- Laurel Ln at Norfolk Southern #719412D (SE of Carrollton)
  - Install RRX warning device
- Bradley St crossing in Carrollton
  - Needs pavement markings on both approaches
- Wellington Mill Rd crossing in Whitesburg
  - Needs pavement markings on both approaches

# POTENTIAL RAIL CROSSING IMPROVEMENTS



# PREVIOUSLY IDENTIFIED BIKE / PED IMPROVEMENTS

- Chattahoochee Hills Regional Greenway Trail
- Carrollton Green Belt
  - 16 mile hard surface trail system connecting neighborhoods, schools, parks and shopping
- Villa Rica Trailhead
- GDOT Complete Streets Policy
  - Sidewalks to connect walkable destinations

Sources: Three Rivers RC, Chattahoochee Hills Regional Greenway Trail, Carrollton Comprehensive Plan

# CURRENTLY COORDINATED TRANSIT IMPROVEMENTS

- Three Rivers RC currently coordinating with Carroll County on recommendations
- Potential outcomes include:
  - Park-and-Ride/Carpool Lots
  - Rideshare Programs to Match Commuters Interested in Carpooling
  - Commuter Shuttle to Atlanta
  - On-Demand Human Services Transportation

# POTENTIAL AVIATION IMPROVEMENTS

- Upgrade airport facilities to better serve corporate clients
  - New apron and five-acre development site north of the terminal
  - Upgrade terminal and parking areas
- Improve access to airport from I-20 and US 27
  - Hog Liver Rd is the most direct route and could be more aesthetically pleasing by clean-up and beautification
  - Improve directional signage to the airport

# ADDITIONAL RESOURCES AVAILABLE

- Access Management
- Development Reviews
- Intersection Operation and Maintenance
- Corridor Strategy Guidance





# Project Prioritization



# PROJECT PRIORITIZATION

- Transportation Plan Identified Need
- Safety
- Connectivity
- Protection of Downtowns
- Construction Designs in Progress
- Supports Comprehensive Planning Efforts
- Maintains Transportation and Land Use Linkage

# NEXT STEPS

- Finalize Potential Improvements
- Finalize Costs and Benefits
- Conduct Project Prioritization
- Develop Long Range Transportation Plan



# CONTACT INFORMATION

**Steve Walker**

Project Manager

GDOT Office of Planning

[stwalker@dot.ga.gov](mailto:stwalker@dot.ga.gov)

(404) 631-1789

[www.dot.ga.gov/carrollcountystudy](http://www.dot.ga.gov/carrollcountystudy)