



February 2016 Letting Report

K. Joe Carpenter, Jr., P.E.
Director of P3/Program Delivery

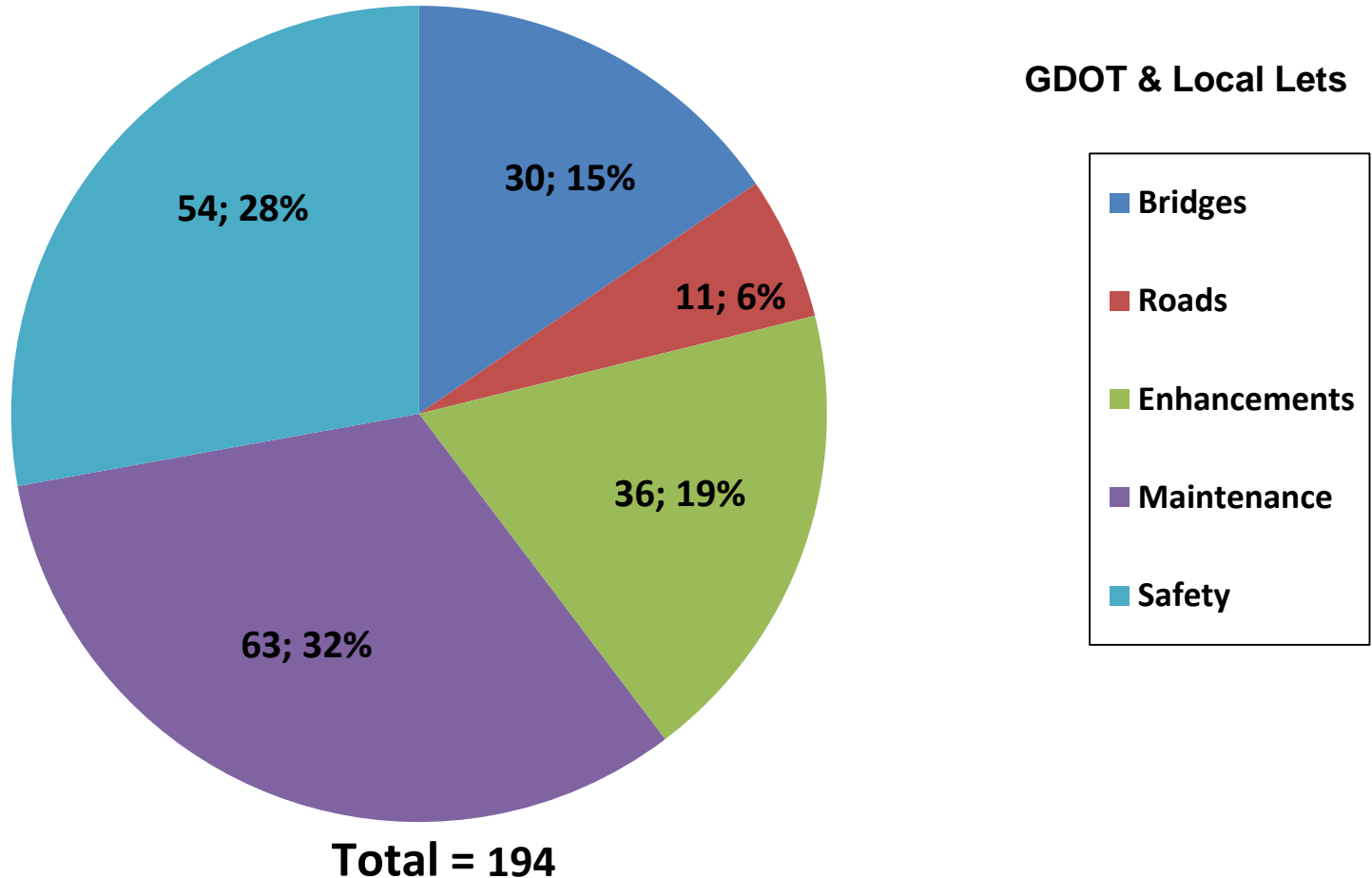
January 21, 2016



Fiscal Year 2016 Letting Report

Number of Projects Let in FY 2016

(Contractor Low Bid Award Data)



Does not include LMIG Projects

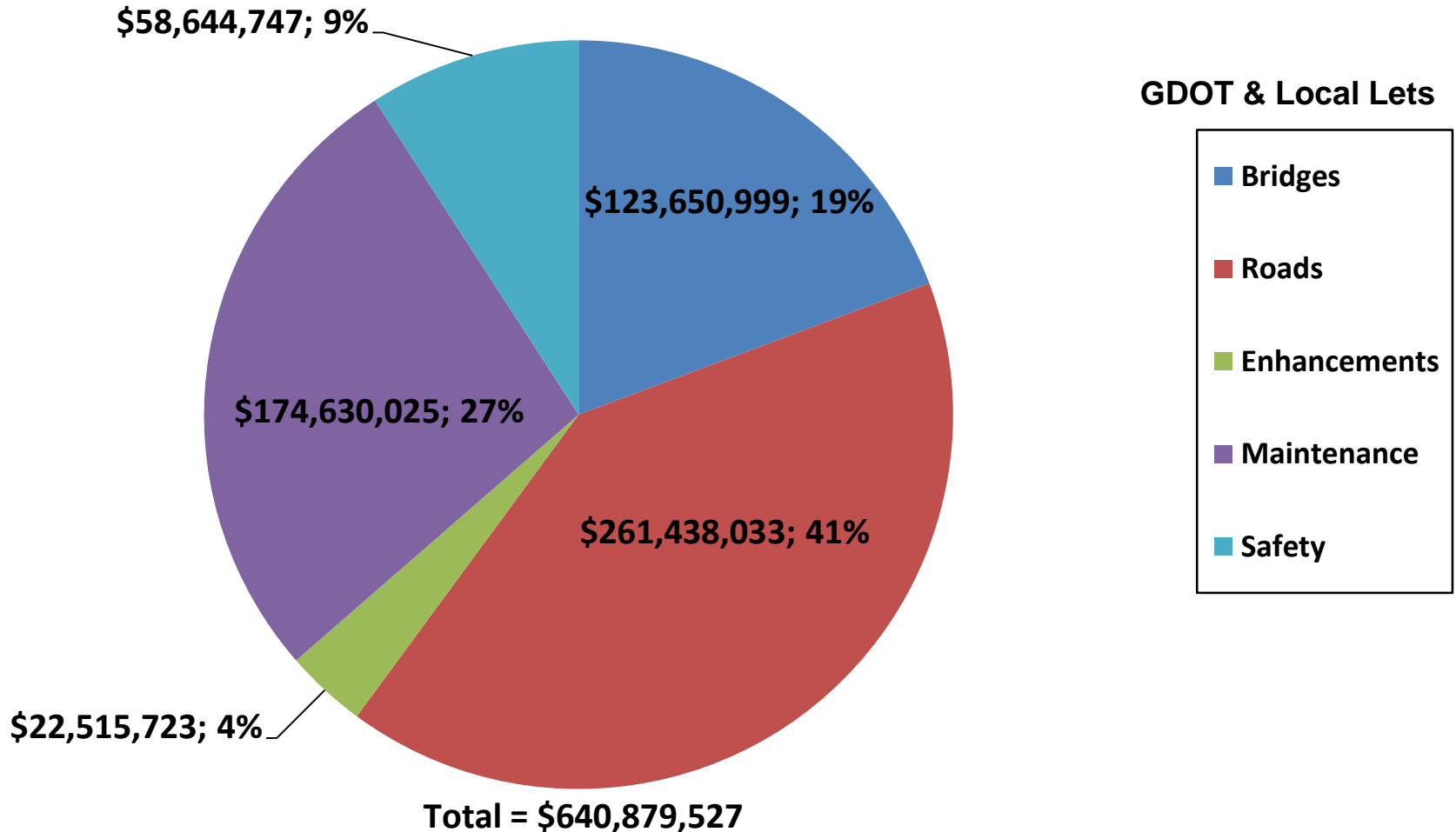
As of January 14, 2016
Source Construction Bidding Administration



Fiscal Year 2016 Letting Report

Dollar Amount of Projects Let in FY 2016

(Contractor Low Bid Award Data)



Does not include LMIG Projects

As of January 14, 2016
Source Construction Bidding Administration



December 2015 Letting Results

Summary	Presented to GDOT Board (Includes Adjustments)	Low Bid (Awarded to Contractor)	Low Bid w/Adjustments (Total Project Obligation)
GDOT Let (Project Count)	0	0	0
GDOT Let (Dollars)	\$0	\$0	\$0
Local Let (Project Count)	0	N/A Local Let	N/A Local Let
Local Let (Dollars)	\$0	N/A Local Let	N/A Local Let

*Low Bid Award Amount includes the Deferred and Awarded projects.
Does not include Engineering and Inspection, Utilities, Liquid AC, Incentives, LMIG and Rejected projects.



Summary of Active Project Phases

Preconstruction & Construction Phases

GDOT Active Projects					
	Scoping Phase ¹	PE Phase ¹	ROW Phase ¹	Construction Phase ^{2,3} (Awarded & Under Construction)	Total of All Phases
No. of Projects	34	957	264	317	1,572
Dollar Amount of Projects	\$28.8M	\$1.04B	\$1.12B	\$3.84B	\$6.03B

Note: Remaining Construction Balance on Awarded projects is \$1.84B

Notes:

1. SCP, PE & ROW Authorized Phases of projects currently active, but not Let.
2. Construction Phase includes GDOT Let only projects (I-75/I-575 Managed Lanes, I-75 Design/Build, Maintenance, Traffic, STIP, Blended TIA, 100% TIA & Weigh-in Motion through January 2016, where "Stop Time" has not been issued.
3. Excludes P3 projects such as I-285/400 & Northwest Corridor

As of January 14, 2016
 Source TPro & Construction Office - Active Contracts No Stop Time
 issued as of January 15, 2016



GDOT Let Projects

February 2016 Letting



GDOT Let Projects

February 2016 Letting

Project ID	Description	Primary County	Primary Work Type	Congressional District	Project Let By	Project Sponsor	2014 AADT
0013621	SIGNING & PAVEMENT MARKINGS @ 44 NS RR LOC IN DISTRICT 2 & 5	EFFINGHAM	RRX Signing & Marking	1	DOT	GDOT	Various
M004821	SR 11/US 129 FROM CR 109/BARNES FERRY ROAD TO N OF SR 247	BIBB	Resurface & Maintenance	2	DOT	GDOT	25,400-37,000
M005273	SR 50/US 82 FROM SR 1BU/RANDOLPH TO SR 520/TERRELL	RANDOLPH	Resurface & Maintenance	2	DOT	GDOT	3,300-4,430
0009323	I-85 @ CR 103/POPLAR ROAD - NEW INTERCHANGE	COWETA	Interchange	3	DOT	Coweta County	53,900
331650-	CR 360/MCINTOSH RD @ FLINT RIVER @ FAYETTE/SPALDING CO LINE	FAYETTE	Bridges	3	DOT	Fayette County	1,380
M004983	SR 85 FROM SR 92 TO CLAYTON COUNTY LINE	FAYETTE	Resurface & Maintenance	3	DOT	GDOT	32,500 - 27,100
M004942	SR 236 FROM SR 8 TO SR 10	DEKALB	Resurface & Maintenance	4	DOT	GDOT	25,100-11,000
M004840	SR 139 FROM SR 85 TO N OF CS 1032/PHOENIX BLVD	CLAYTON	Resurface & Maintenance	5	DOT	GDOT	18,300-32,600
M005238	I-675 @ 10 LOCS - BRIDGE PRESERVATION	CLAYTON	Bridges	5	DOT	GDOT	Various
M005239	I-85 @ 10 LOCS IN FULTON COUNTY - BRIDGE PRESERVATION	FULTON	Bridges	5	DOT	GDOT	Various
0012832	SR 6 @ CS 6396/NORTH COMMERCE DRIVE	FULTON	Operational Improvement	5	DOT	GDOT	49,100
M004583	SR 139 FROM COBB COUNTY LINE TO CR 4176/CASCADE AVE	FULTON	Resurface & Maintenance	5	DOT	GDOT	10,500-20,500
0013140	JOHNS CREEK CITYWIDE ITS SYSTEM EXPANSION	FULTON	ITS	6	LOC	Johns Creek	Various
0006276	HOSPITAL DRIVE CONNNECTOR ROAD - LCI PROJECT	GWINNETT	Roadway Project	7	LOC	Duluth	2,010

****Note: Bridge Bond Project**



GDOT Let Projects

February 2016 Letting

Project ID	Description	Primary County	Primary Work Type	Congressional District	Project Let By	Project Sponsor	2014 AADT
0007627	PRESERVATION OF 1906 AB&A RAILROAD BUILDING IN FITZGERALD	BEN HILL	Historic Preservation	8	LOC	Fitzgerald	N/A
0012753	I-75 FROM SR 247 TO CR 85/ARKWRIGHT ROAD - REPLACE LIGHTING	BIBB	Lighting	8	DOT	GDOT	80,300
0010849	SR 35/US 319 @ CR 89 INDIAN LAKE DRIVE	COLQUITT	Intersection Improvement	8	DOT	GDOT	9,910
0002425**	SR 31/US 319/US 441 @ TURNPIKE CREEK 5.3 MI S OF MCRAE	TELFAIR	Bridges	8	DOT	GDOT	2,020
M004556	SR 149 FROM 0.01 MI N OF SR 117 TO WHEELER COUNTY LINE	TELFAIR	Resurface & Maintenance	8	DOT	GDOT	70-230
M005384	I-75 @ 15 LOCS IN COOK; LOWNDES & TIFT COUNTY	TIFT	Bridges	8	DOT	GDOT	Various
M004807	I-75 FM S OF CR 204/SOUTHWELL RD/TIFT TO S OF SR 32/TURNER	TIFT	Resurface & Maintenance	8	DOT	GDOT	48,900-38,800
0007156**	SR 98 @ HICKORY LEVEL CREEK 3.5 MI SW OF HOMER	BANKS	Bridges	9	DOT	GDOT	1,110
M004991	SR 15; SR 15 CONN & SR 515 @ 3 LOCS - BRIDGE PRESERVATION	HABERSHAM	Bridges	9	DOT	GDOT	Various
0012829	SR 105/US 441 @ SR 15/US 23	HABERSHAM	Operational Improvement	9	DOT	GDOT	10,300-20,100
M004924	SR 347 @ NS #717815K - BRIDGE REHAB	HALL	Bridges	9	DOT	GDOT	12,000
M005377	I-985 @ 7 LOCS IN HALL COUNTY - BRIDGE PRESERVATION	HALL	Bridges	9	DOT	GDOT	Various
0013318	OLD HWY 29 FROM SR 8 TO LONG POINT COUNTY PARK; INC MAIN RD	HART	Resurface & Maintenance	9	DOT	Hart County	640
M005299	SR 51 FROM SR 17 TO SR 77	HART	Resurface & Maintenance	9	DOT	GDOT	1,560-3,740

****Note: Bridge Bond Project**



GDOT Let Projects

February 2016 Letting

Project ID	Description	Primary County	Primary Work Type	Congressional District	Project Let By	Project Sponsor	2014 AADT
0008912	DOWNTOWN DEVELOPMENT AUTHORITY DIST STREETScape IN DAHLONEGA	LUMPKIN	Streetscapes	9	LOC	Dahlonega	4,660
0010416**	SR 184 @ TOCCOA CREEK 3.5 MI NE OF TOCCOA	STEPHENS	Bridges	9	DOT	GDOT	870
M005064	SR 11 FROM CS 541/KENIMER STREET TO LUMPKIN COUNTY LINE	WHITE	Resurface & Maintenance	9	DOT	GDOT	2,650-9,290
M004936	SR 24 FROM PUTNAM COUNTY LINE TO I-20	MORGAN	Resurface & Maintenance	10	DOT	GDOT	7,250-9,890
M004986	SR 24 FROM CS 671/REIDS ROAD TO MORGAN COUNTY LINE	PUTNAM	Resurface & Maintenance	10	DOT	GDOT	7,290-7,780
M004701	SR 44 FROM SR 17BU/WILKES TO SR 79/LINCOLN	WILKES	Resurface & Maintenance	10	DOT	GDOT	240-710
M004933	SR 17 FROM SR 47 TO 0.60 MI N OF SR 44	WILKES	Resurface & Maintenance	10	DOT	GDOT	3,010
0004915	SR 140 FM SR 53/FLOYD TO 0.3 MI W OF OOTHKALOOGA CRK/BARTOW	BARTOW	Widening	11	DOT	GDOT	9,070
0013962	CS 2026/CR 3551/WINDY RIDGE PKWY @ SR 3	COBB	Operational Improvement	11	LOC	Cobb County	None
M005231	SR 1 @ 6 LOCS; SR 20 @ 6 LOCS & SR 61 @ 1 LOC - BRIDGE REHAB	FLOYD	Bridges	11	DOT	GDOT	Various
M004595	SR 135 CONN FROM SR 19 TO 0.01 MI E OF SR 135 IN HAZLEHURST	JEFF DAVIS	Resurface & Maintenance	12	DOT	GDOT	6,300
M004709	SR 21 FROM S OF CS 761/HALCYONDALE RD TO S OF SR 73	SCREVEN	Resurface & Maintenance	12	DOT	GDOT	4,050
0008375	SR 8 @ CONNERS RD; @ MANN RD/MASON CREEK RD & @ POST RD	DOUGLAS	Intersection Improvement	13	DOT	GDOT	8,630

****Note: Bridge Bond Project**

CR 360/MCINTOSH RD @ FLINT RIVER @ FAYETTE/SPALDING CO LINE

Bridge Replacement Project in Fayette County

Congressional District 3

Begin
Project



End
Project



CR 360/MCINTOSH RD @ FLINT RIVER @ FAYETTE/SPALDING CO LINE
Bridge Replacement Project in Fayette County
Congressional District 3 (continued)

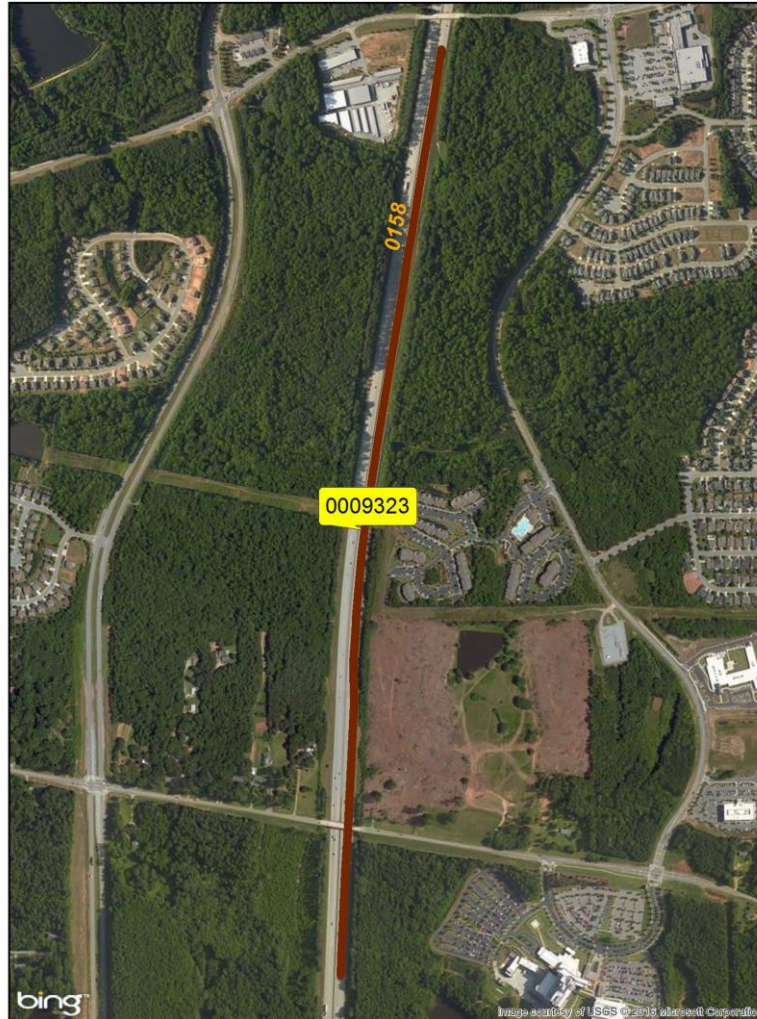




I-85 @ CR 103/POPLAR ROAD - NEW INTERCHANGE

New Interchange Project in Coweta County

Congressional District 3





I-85 @ CR 103/POPLAR ROAD - NEW INTERCHANGE

New Interchange Project in Coweta County

Congressional District 3 (continued)



I-85 @ CR 103/POPLAR ROAD - NEW INTERCHANGE

New Interchange Project in Coweta County

Congressional District 3 (continued)





SR 31/US 319/US 441 @ TURNPIKE CREEK 5.3 MI S OF MCRAE Bridge Replacement Project in Telfair County Congressional District 8



End Project

Begin Project

**SR 31/US 319/US 441 @ TURNPIKE CREEK 5.3 MI S OF MCRAE
Bridge Replacement Project in Telfair County
Congressional District 8 (continued)**





SR 184 @ TOCCOA CREEK 3.5 MI NE OF TOCCOA Bridge Replacement Project in Stephens County Congressional District 9

Begin Project

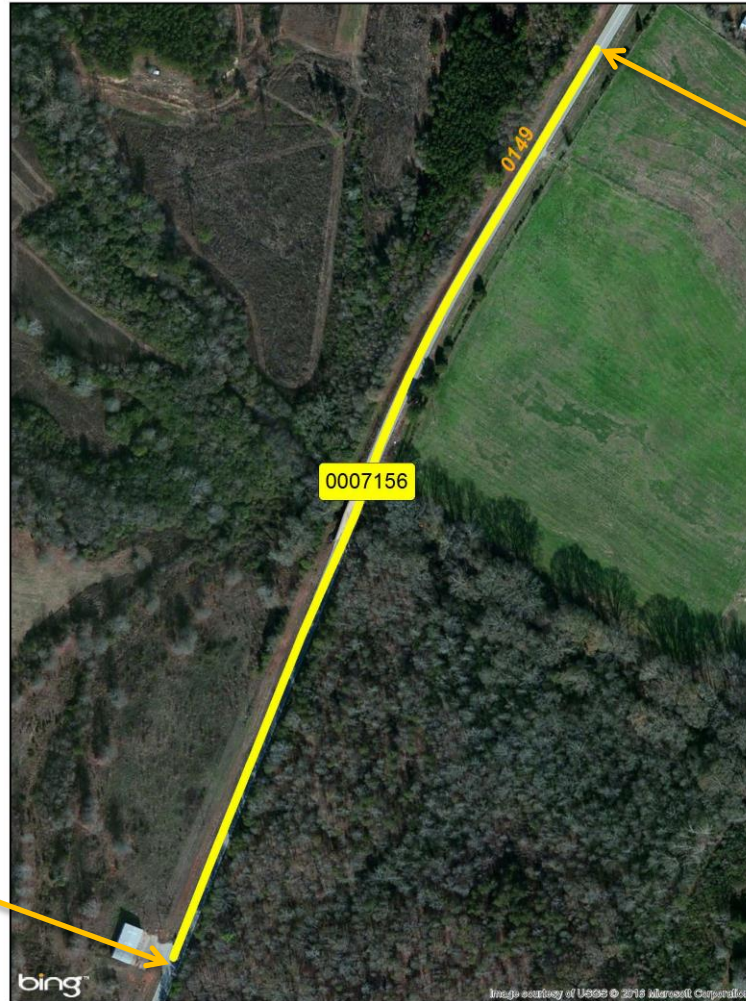
End Project



SR 184 @ TOCCOA CREEK 3.5 MI NE OF TOCCOA Bridge Replacement Project in Stephens County Congressional District 9 (continued)



SR 98 @ HICKORY LEVEL CREEK 3.5 MI SW OF HOMER Bridge Replacement Project in Banks County Congressional District 9



Begin Project

End Project

SR 98 @ HICKORY LEVEL CREEK 3.5 MI SW OF HOMER

Bridge Replacement Project in Banks County

Congressional District 9 (continued)



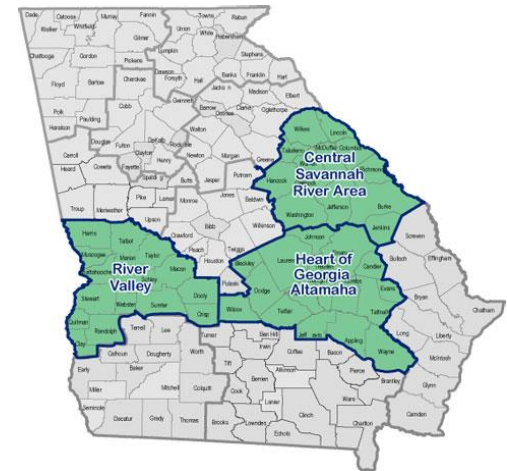


February 2016 Letting Proposed TIA Projects

Kelvin Mullins

State TIA Administrator

January 21, 2016





TIA Projects

February 2016 Letting

Project ID	Description	Primary County	Primary Work Type	Congressional District	Project Let By	TIA Region	2014 AADT
0012164	SNELLS BRIDGE ROAD IN JOHNSON COUNTY - TIA	JOHNSON	Resurface & Maintenance	10	DOT	Heart of Georgia Altamaha	200 - 340
0012167	CROSS CEDAR ROAD SEG 1 IN JOHNSON COUNTY - TIA	JOHNSON	Resurface & Maintenance	10	DOT	Heart of Georgia Altamaha	N/A
0012168	CROSS CEDAR ROAD SEG 2 IN JOHNSON COUNTY - TIA	JOHNSON	Resurface & Maintenance	10	DOT	Heart of Georgia Altamaha	N/A
0011596	ANTHONY STREET IN BAXLEY - TIA	APPLING	Resurface & Maintenance	12	DOT	Heart of Georgia Altamaha	3170
0011597	COPELAND AVE IN BAXLEY - TIA	APPLING	Resurface & Maintenance	12	DOT	Heart of Georgia Altamaha	N/A
0011598	MLK AVE SEG 1 IN BAXLEY - TIA	APPLING	Resurface & Maintenance	12	DOT	Heart of Georgia Altamaha	N/A
0011599	HARLEY STREET IN BAXLEY - TIA	APPLING	Resurface & Maintenance	12	DOT	Heart of Georgia Altamaha	N/A
0011601	KENNY LANE IN BAXLEY - TIA	APPLING	Resurface & Maintenance	12	DOT	Heart of Georgia Altamaha	N/A
0011602	MLK AVE SEG 2 IN BAXLEY - TIA	APPLING	Resurface & Maintenance	12	DOT	Heart of Georgia Altamaha	N/A
0011603	JOHNSON STREET IN BAXLEY - TIA	APPLING	Resurface & Maintenance	12	DOT	Heart of Georgia Altamaha	N/A
0011604	LACKAWANNA STREET SEG 1 IN BAXLEY - TIA	APPLING	Resurface & Maintenance	12	DOT	Heart of Georgia Altamaha	N/A
0011605	PINE STREET IN BAXLEY - TIA	APPLING	Resurface & Maintenance	12	DOT	Heart of Georgia Altamaha	N/A



TIA Projects

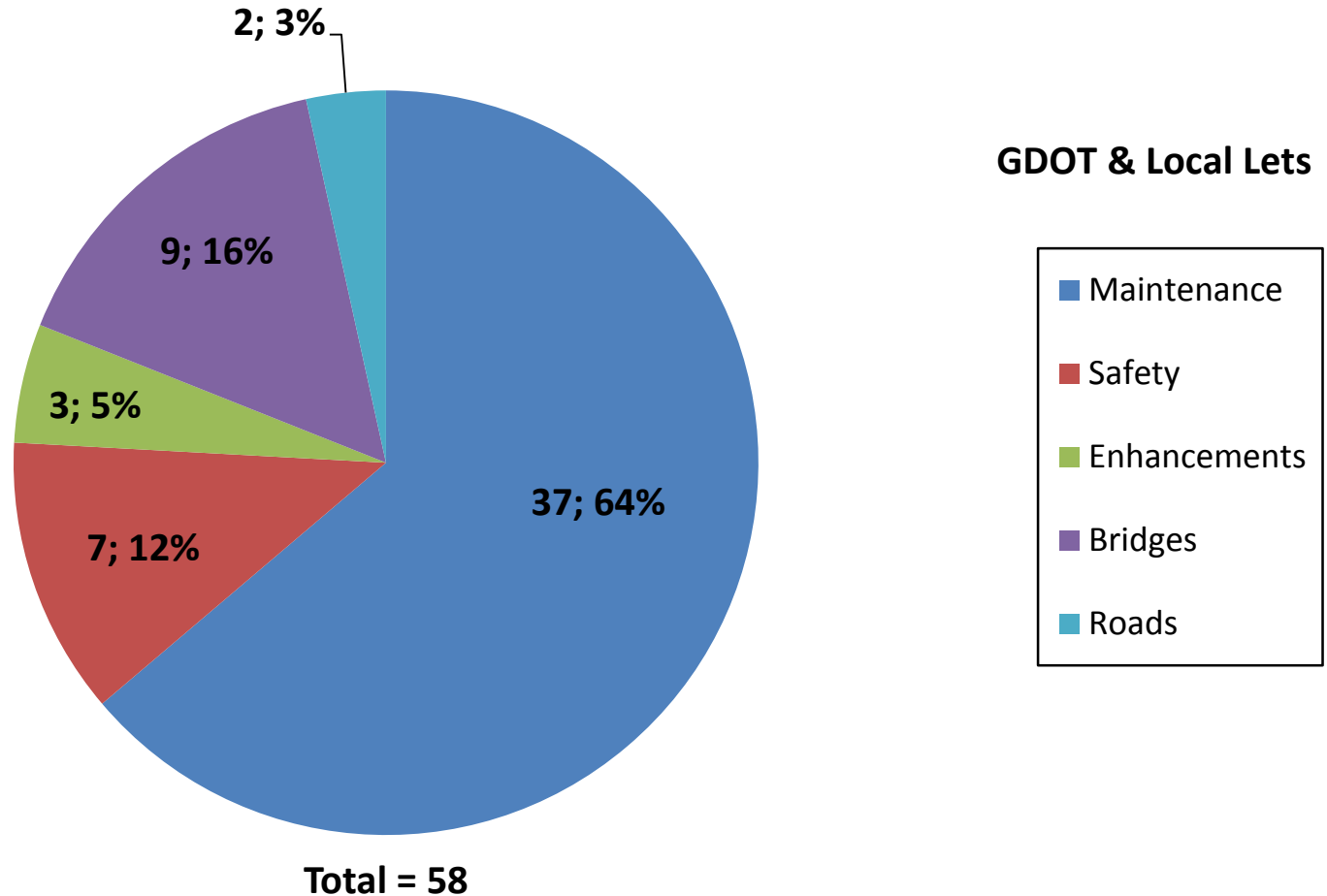
February 2016 Letting

Project ID	Description	Primary County	Primary Work Type	Congressional District	Project Let By	TIA Region	2014 AADT
0011606	SW PARK AVE IN BAXLEY - TIA	APPLING	Resurface & Maintenance	12	DOT	Heart of Georgia Altamaha	N/A
0011607	NORTH LEE STREET EXTENSION IN BAXLEY - TIA	APPLING	Resurface & Maintenance	12	DOT	Heart of Georgia Altamaha	N/A
0011608	SPRUCE STREET IN BAXLEY - TIA	APPLING	Resurface & Maintenance	12	DOT	Heart of Georgia Altamaha	N/A
0011610	HOLMESVILLE AVE IN BAXLEY - TIA	APPLING	Resurface & Maintenance	12	DOT	Heart of Georgia Altamaha	930
0011629	ANDREWS STREET IN SURRENCY - TIA	APPLING	Resurface & Maintenance	12	DOT	Heart of Georgia Altamaha	N/A



Fiscal Year 2016 Letting Report

Number of Projects February 2016 Letting



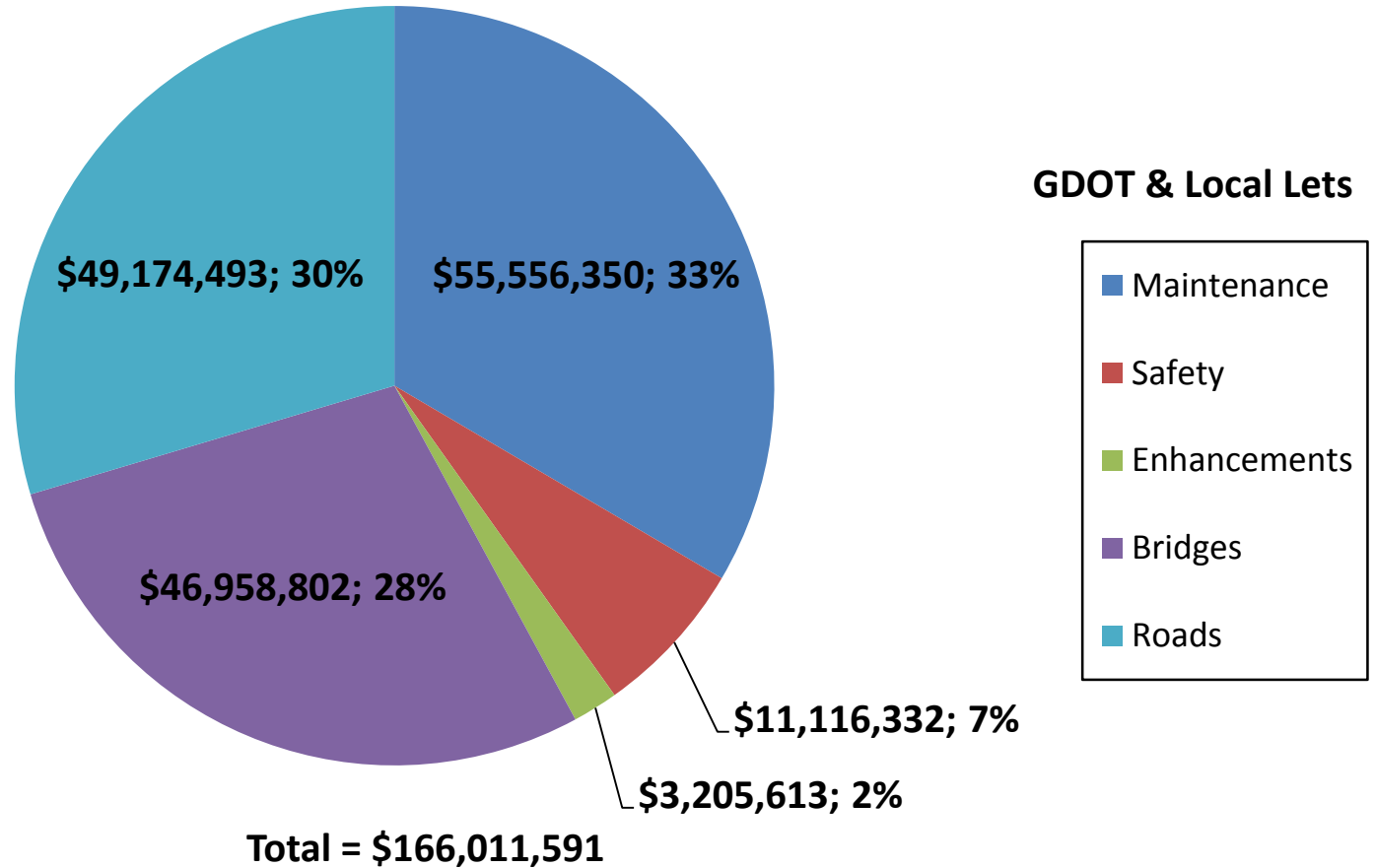
Does not include LMIG Projects

As of January 14, 2016
Source TPro – Chief Approved FY '16 Letting List



Fiscal Year 2016 Letting Report

Dollar Amount of Projects February 2016 Letting



Does not include LMIG Projects

As of January 14, 2016
Source TPro – Chief Approved FY '16 Letting List



Proposed Revisions To The Construction Work Program

**Jay Roberts
Director of Planning**

January 21, 2016



January 2016 CWP Revision

Board Revisions:

1. P.I. No. 533205, Chatham County, CR 302/Montgomery Cross Rd at Casey Canal 1 Mile E. of SR 204
Bridge Replacement in Congressional District 1
Action: Deletion from the Program

2. P.I. No. 0014073, Echols County, SR 376 at Alapohoochee River 4 miles W. of Statenville
Bridge Replacement in Congressional District 1
Action: Addition to the Program

3. P.I. No. 0014072, Bibb County, I-16 EB & WB at Walnut Creek 1 Mile E. of Macon
Bridge Replacement in Congressional District 2
Action: Addition to the Program

4. P.I. No. 0014074, Franklin County, I-85 at SR 198 3 Miles SW of Carnesville
Bridge Replacement in Congressional District 9
Action: Addition to the Program

5. P.I. No. 0014075, Franklin County, I-85 SB & NB at Indian Creek 3.5 Miles SW of Carnesville
Bridge Replacement in Congressional District 9
Action: Addition to the Program



January 2016 CWP Revision

Board Revisions:

6. P.I. No. 0014076, Jackson County, I-85 SB & NB at CR 296/Ridgeway Church Rd. 3.3 Miles N. of Commerce
Bridge Replacement in Congressional District 9
Action: Addition to the Program

7. P.I. No. 0010100, Clarke County, CR 32/Mitchell Bridge Rd from SR 10 to CR 684/Athens West Pkwy
Bridge Replacement in Congressional District 10
Action: Deletion from the Program



February 2016 CWP Revision

Board Revisions:

1. P.I. No. 0014169, Macon County, SR 128 at Horse Creek 8 miles NE of Ideal Bridge Replacement in Congressional District 2
Action: Addition to the Program
2. P.I. No. 0014170, Muscogee County, SR 22 Spur at Weracoba Creek in Columbus Bridge Replacement in Congressional District 2
Action: Addition to the Program
3. P.I. No. 0014171, Muscogee County, SR 22/US 80 at Flatrock Creek in Columbus Bridge Replacement in Congressional District 2
Action: Addition to the Program
4. P.I. No. 0014168, Heard County, SR 34 at Chattahoochee River Tributary at Daniel Shoals Creek Bridge Replacement in Congressional District 3
Action: Addition to the Program
5. P.I. No. 0014167, Fannin County, CR 38/Shallowford Bridge Road at Toccoa River S. of Morgonton Bridge Replacement in Congressional District 9
Action: Addition to the Program