



September 2015 Letting Report

Genetha Rice-Singleton
Assistant Director of P3/Program Delivery

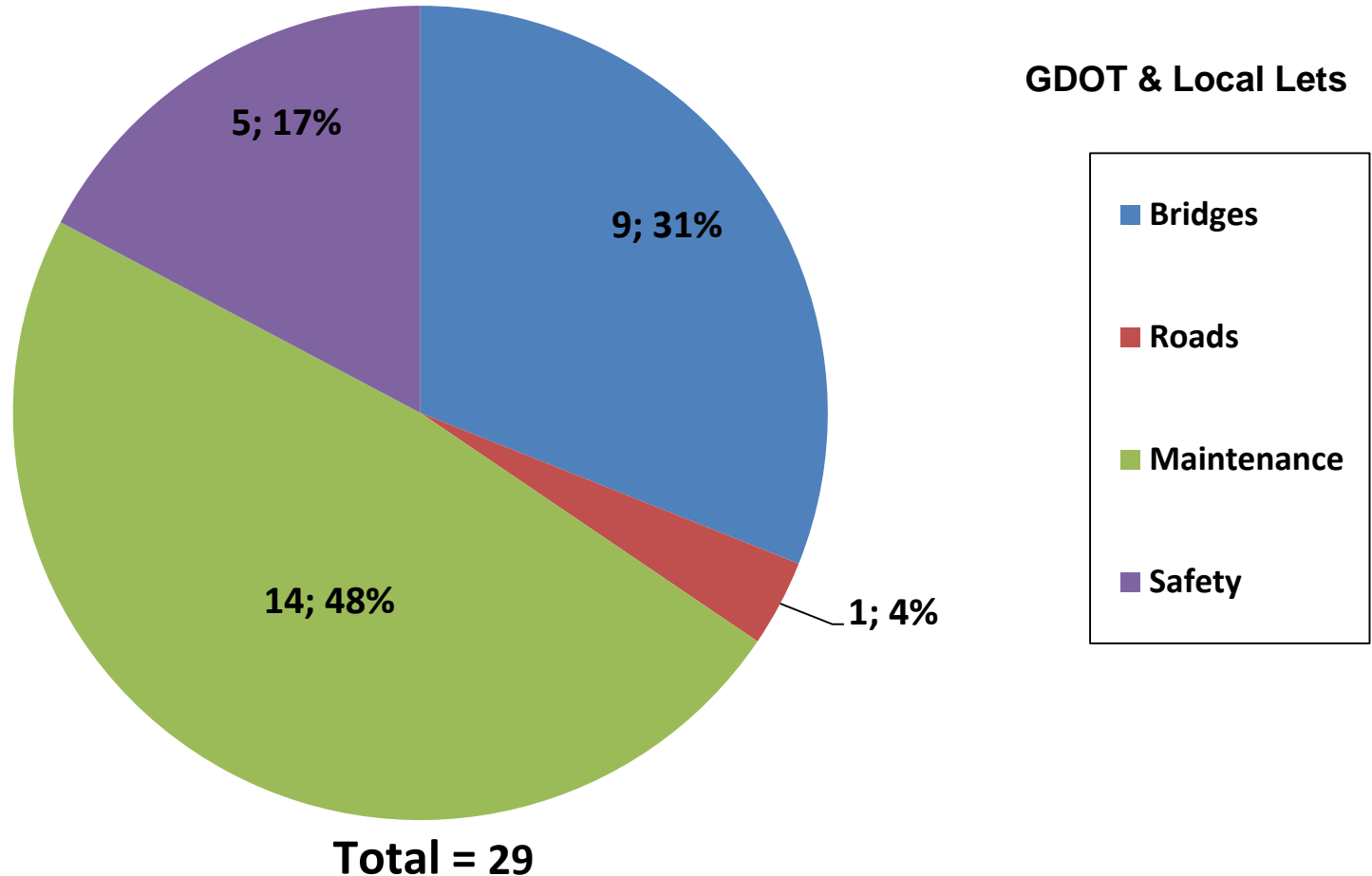
August 20, 2015



Fiscal Year 2016 Letting Report

Number of Projects Let in FY 2016

(Contractor Low Bid Award Data)



Does not include LMIG Projects

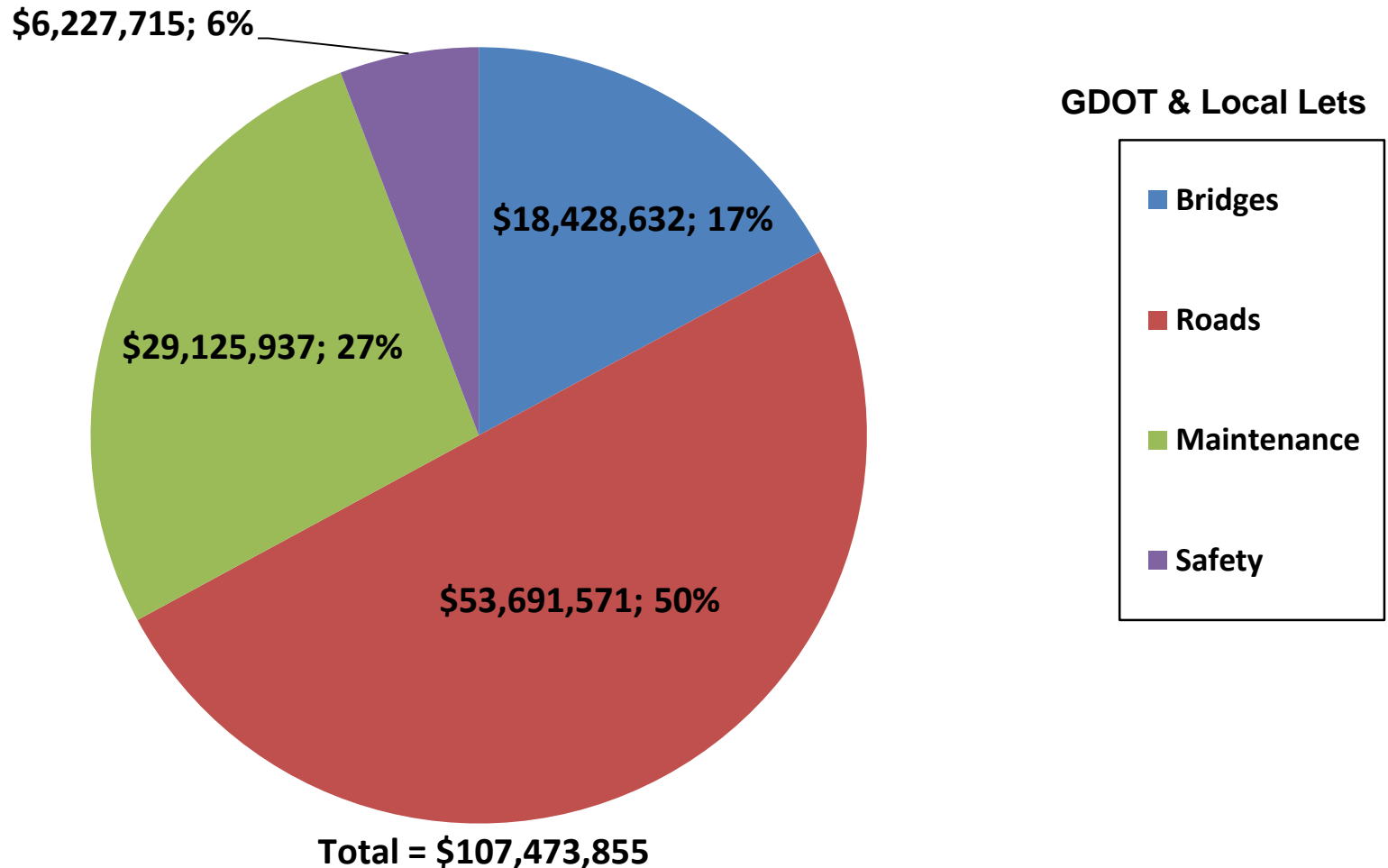
As of August 13, 2015
Source Construction Bidding Administration



Fiscal Year 2016 Letting Report

Dollar Amount of Projects Let in FY 2016

(Contractor Low Bid Award Data)



Does not include LMIG Projects

As of August 13, 2015
Source Construction Bidding Administration



July 2015 Letting Results

| Summary | Presented to GDOT Board (Includes Adjustments) | Low Bid (Awarded to Contractor) | Low Bid w/Adjustments (Total Project Obligation) |
|------------------------------|--|------------------------------------|--|
| GDOT Let (Project Count) | 34 | 28 | 28 |
| GDOT Let (Dollars) | \$145,095,000 | \$107,168,675 | \$113,766,044 |
| Local Let (Project Count) | 1 | N/A Local Let | N/A Local Let |
| Local Let (Dollars) | \$305,180 | N/A Local Let | N/A Local Let |

*Low Bid Award Amount includes the Deferred and Awarded projects.
Does not include Engineering and Inspection, Utilities, Liquid AC, Incentives, LMIG and Rejected projects.



GDOT Let Projects

September 2015 Letting



GDOT Let Projects

September 2015 Letting

| Project ID | Description | Primary County | Primary Work Type | Congressional District | Project Let By | Project Sponsor |
|------------|--|----------------|----------------------------|------------------------|----------------|-----------------|
| 0007163** | SR 252 @ SATILLA RIVER OVERFLOWS 10 MI NORTHEAST OF FOLKSON | CHARLTON | Bridges | 1 | DOT | GDOT |
| M004632 | SR 26 FROM W OF CR 1111/COLEMAN BLVD TO E OF CSX #641194C | CHATHAM | Resurface & Maintenance | 1 | DOT | GDOT |
| M004903 | SR 204 FROM CS 645/37TH STREET TO I-16 | CHATHAM | Resurface & Maintenance | 1 | DOT | GDOT |
| M004630 | SR 21 FROM 0.20 MI N OF NS #916917C TO JACKS BRANCH | EFFINGHAM | Resurface & Maintenance | 1, 12 | DOT | GDOT |
| 0013347 | OFF-SYSTEM SAFETY IMPROVEMENTS @ 11 CR LOC IN LOWNDES COUNTY | LOWNDES | Signing | 1, 8 | DOT | Lowndes County |
| 0013547 | OFF-SYSTEM SAFETY IMPROVEMENTS @ 19 CR LOCS IN BIBB COUNTY | BIBB | Signing | 2, 8 | DOT | Bibb County |
| 0013348 | OFF-SYSTEM SAFETY IMPROVEMENTS @ 9 CR LOCS IN DECATUR COUNTY | DECATUR | Signing | 2 | DOT | Decatur County |
| 0010292 | SR 520/US 82 @ CR 459/COUNTY LINE ROAD | DOUGHERTY | Intersection Improvement | 2 | DOT | GDOT |
| 0009264 | LEESBURG TRAIN DEPOT - RENOVATION & PRESERVATION | LEE | Miscellaneous Improvements | 2 | LOC | Leesburg |
| M005306 | I-185 @ 8 LOCS - BRIDGE PRESERVATION | MUSCOGEE | Bridges | 3 | DOT | GDOT |
| 0009031 | NORTHLAKE AREA STREETSCAPES | DEKALB | TE-Bike/Ped Facility | 4, 6 | LOC | DeKalb County |
| 0009032 | EAST MOUNTAIN STREET SIDEWALK PROJECT | DEKALB | TE-Bike/Ped Facility | 4 | LOC | Stone Mountain |

****Note: Bridge Bond Project**



GDOT Let Projects

September 2015 Letting

| Project ID | Description | Primary County | Primary Work Type | Congressional District | Project Let By | Project Sponsor |
|------------|---|----------------|-------------------------|------------------------|----------------|---------------------------------|
| 742980-** | SR 212 @ HONEY CREEK 2.5 MI S OF JCT SR 138 | ROCKDALE | Bridges | 4 | DOT | GDOT |
| 0007912 | SR 154; CS 520; CS 904; CS 3541 & CS 3694 @ 18 LOCS | FULTON | Signals | 5 | DOT | GDOT |
| 0009048 | FOLK ART PARK PEDESTRIAN IMPROVEMENTS | FULTON | TE-Landscape/Beautify | 5 | LOC | Atlanta |
| 0010350 | SR 8/SR 10 FROM CS 1860/PIEDMONT AVE TO SR 42 | FULTON | Pedestrian Crossings | 5 | DOT | GDOT |
| 0010641 | SR 8 FROM CS 1708/WILLIAMS STREET TO CS 3461/LUCKIE STREET | FULTON | TE-Bike/Ped Facility | 5 | LOC | Georgia Institute of Technology |
| 0011828 | I-20 @ I-285 | FULTON | Operational Improvement | 5 | DOT | GDOT |
| 0002310 | SR 9 FROM CS 285/CLIFTWOOD DRIVE TO CS 262/HAMMOND DRIVE | FULTON | TE-Bike/Ped Facility | 6 | LOC | Sandy Springs |
| 0013356 | CS 145/NORTHRIDGE RD @ 1 LOC - OFF-SYSTEM SAFETY IMPROVEMENTS | FULTON | Signing | 6 | DOT | Sandy Springs |
| 0010659 | GEORGIA GWINNETT COLLEGE PEDESTRIAN PATHWAYS | GWINNETT | TE-Bike/Ped Facility | 7 | LOC | Georgia Gwinnett College |
| 0010660 | SUWANEE DAM RD FROM PTREE IND BLVD TO BRUSHY CRK & GREENWAY | GWINNETT | TE-Bike/Ped Facility | 7 | LOC | Suwanee |
| 0010576 | SR 11; SR 76; S JEFFERSON & E WASHINGTON @ 4 LOCS - PH III | BERRIEN | TE-Bike/Ped Facility | 8 | LOC | Nashville |
| 0010585 | SR 7 FROM CS 666/7TH STREET TO CS 733/EAST ROGERS STREET | COOK | TE-Bike/Ped Facility | 8 | LOC | Adel |

****Note: Bridge Bond Project**



GDOT Let Projects

September 2015 Letting

| Project ID | Description | Primary County | Primary Work Type | Congressional District | Project Let By | Project Sponsor |
|------------|--|----------------|--------------------------|------------------------|----------------|-----------------|
| 0013353 | OFF-SYSTEM SAFETY IMPROVEMENTS @ 20 LOCS IN HOUSTON COUNTY | HOUSTON | Signing | 8 | DOT | Houston County |
| 0007591 | SIDEWALKS; LIGHTING & LANDSCAPING IN OCILLA | IRWIN | Sidewalks | 8 | LOC | Ocilla |
| 0013543 | OFF-SYSTEM SAFETY IMPROVEMENTS @ 11 LOCS IN JONES COUNTY | JONES | Signing | 8 | DOT | Jones County |
| 0008172 | MLK CORRIDOR PROJECT IN LOWNDES COUNTY | LOWNDES | TE-Landscape/Beautify | 8 | LOC | Valdosta |
| 0013548 | OFF-SYSTEM SAFETY IMPROVEMENTS @ 13 LOCS IN MONROE COUNTY | MONROE | Signing | 8 | DOT | Monroe County |
| 0007021** | SR 53 @ CHESTATEE RIVER | FORSYTH | Bridges | 9 | DOT | GDOT |
| 0010695 | CS 815/RAILROAD ST @ 1 LOC & CS 830/CS 858/BOWERS ST @ 1 LOC | FRANKLIN | TE-Bike/Ped Facility | 9 | LOC | Royston |
| 0006612 | ELLIJAY STREETScape FM SR 282 TO SPRING STREET - PHASE III | GILMER | TE-Bike/Ped Facility | 9 | LOC | Ellijay |
| 0001935 | HARDMAN FARM VISITOR CENTER - PARKING LOTS&PEDESTRIAN TRAIL | WHITE | TE-Scenic Hwy/Welcme Ctr | 9 | LOC | White County |
| M004813 | SR 10/US 78 FM GAINES SCHOOL RD TO OGLETHORPE COUNTY LINE | CLARKE | Resurface & Maintenance | 10 | DOT | GDOT |
| 0006605 | GREENSBORO STREETScape PLAN - PHASE III | GREENE | TE-Bike/Ped Facility | 10 | LOC | Greensboro |
| 0010345 | BOSTWICK STREETScape - PHASE II | MORGAN | TE-Bike/Ped Facility | 10 | LOC | Bostwick |

****Note: Bridge Bond Project**



GDOT Let Projects

September 2015 Letting

| Project ID | Description | Primary County | Primary Work Type | Congressional District | Project Let By | Project Sponsor |
|------------|--|----------------|-------------------------|------------------------|----------------|-----------------|
| 0013592 | OFF-SYSTEM SAFETY IMPROVEMENTS @ 113 LOCS IN WASHINGTON | WILKES | Signing | 10 | DOT | Washington |
| M004835 | SR 3 FROM CS 841/MLK JR BLVD TO N OF SR 293 CONNECTOR | BARTOW | Resurface & Maintenance | 11 | DOT | GDOT |
| M004916 | SR 3 @ PUMPKINVINE CREEK @ 4 BRIDGES - DECK REHAB REPAIRS | BARTOW | Bridges | 11 | DOT | GDOT |
| 0010655 | SR 92 @ 1 LOC & CR 426/ROBIN ROAD @ 1 LOC | CHEROKEE | TE-Bike/Ped Facility | 11 | LOC | Cherokee County |
| M004877 | SR 3 FM CR 2025/AKERS MILL ROAD TO CR 9897/BELLS FERRY ROAD | COBB | Resurface & Maintenance | 11 | DOT | GDOT |
| 0013357 | CS 1720 & CS 4519 @ 2 LOCS - OFF-SYSTEM SAFETY IMPROVEMENTS | COBB | Signing | 11, 13 | DOT | Smyrna |
| 0012774 | I-75 @ CR 7958/WINDY HILL RD - DIVERGING DIAMOND INTERCHANGE | COBB | Interchange | 11, 6 | LOC | Cobb County |
| 0013341 | OFF-SYSTEM SAFETY IMPROVEMENTS @ 31 LOCS IN BAXLEY | APPLING | Signing | 12 | DOT | Baxley |
| 0013359 | OFF-SYSTEM SAFETY IMPROVEMENTS @ 23 LOCS IN APPLING COUNTY | APPLING | Signing | 12 | DOT | GDOT |
| 0010583 | SR 268 FROM CR 141/MAGNOLIA STREET TO CR 142/CYPRESS AVE | COFFEE | TE-Bike/Ped Facility | 12 | LOC | Ambrose |
| 0010687 | EUCHEE CREEK TRAIL CONNECTOR | COLUMBIA | TE-Bike/Ped Facility | 12 | LOC | Grovetown |
| 0010869 | SR 21BU FROM CS 610/1ST STREET TO SR 119 IN SPRINGFIELD | EFFINGHAM | TE-Bike/Ped Facility | 12 | LOC | Springfield |

****Note: Bridge Bond Project**



GDOT Let Projects

September 2015 Letting

| Project ID | Description | Primary County | Primary Work Type | Congressional District | Project Let By | Project Sponsor |
|------------|--|----------------|----------------------------|------------------------|----------------|-------------------------|
| 0006319 | CR 200/OLD SAVANNAH ROAD @ SCULLS CREEK 5.3 MI S OF MILLEN | JENKINS | Bridges | 12 | DOT | GDOT |
| 0013360 | OFF-SYSTEM SAFETY IMPROVEMENTS @ 8 LOCS IN RICHMOND COUNTY | RICHMOND | Signing | 12 | DOT | Richmond County |
| 245325- | CR 65/WINDSOR SPRINGS ROAD @ NS #734145P IN HEPHZIBAH | RICHMOND | Bridges | 12 | DOT | Augusta/Richmond County |
| 0013331 | OFF-SYSTEM SAFETY IMPROVEMENTS @ 5 LOCS IN TATTNALL COUNTY | TATTNALL | Signing | 12 | DOT | Tattnall County |
| 0013355 | SAFETY PROJECT @ 8 LOCS IN CLAYTON COUNTY | CLAYTON | Pavement Markings | 13, 5 | DOT | Clayton County |
| 0010728 | SR 5/SR 8 FROM SR 92 TO CS 710/MCCARLEY STREET | DOUGLAS | TE-Bike/Ped Facility | 13 | LOC | Douglasville |
| M005198 | I-20 FROM SWEETWATER CREEK TO CS 3541/HILL STREET | FULTON | Resurface & Maintenance | 13, 5 | DOT | GDOT |
| M004907 | SR 20 FROM ALABAMA STATE LINE TO SR 100 | FLOYD | Resurface & Maintenance | 14 | DOT | GDOT |
| 0007543 | TRANSPORTATION IMPROVEMENTS IN WALKER COUNTY | WALKER | Miscellaneous Improvements | 14 | DOT | Walker County |
| M004908 | SR 2 FROM SR 193 TO CATOOSA COUNTY LINE | WALKER | Resurface & Maintenance | 14 | DOT | GDOT |
| 0010685 | CS 725/CS 874/CHATTANOOGA AVE;CS 726/SELVIDGE ST &RR @ 3 LOC | WHITFIELD | TE-Bike/Ped Facility | 14 | LOC | Dalton |
| 0013326 | OFF-SYSTEM SAFETY IMPROVEMENTS @ 74 LOCS IN DALTON | WHITFIELD | Pavement Markings | 14 | DOT | GDOT |
| 0013327 | OFF-SYSTEM SAFETY IMPROVEMENTS @ 14 LOCS IN WHITFIELD COUNTY | WHITFIELD | Signing | 14 | DOT | GDOT |

****Note: Bridge Bond Project**

SR 252 @ SATILLA RIVER OVERFLOW Bridge Project in Charlton County, Congressional District 1





SR 252 @ SATILLA RIVER OVERFLOW (Continued...) Bridge Project in Charlton County, Congressional District 1





SR 212 @ Honey Creek Bridge Project in Rockdale County, Congressional District 4





SR 212 @ Honey Creek Bridge Project in Rockdale County, Congressional District 4





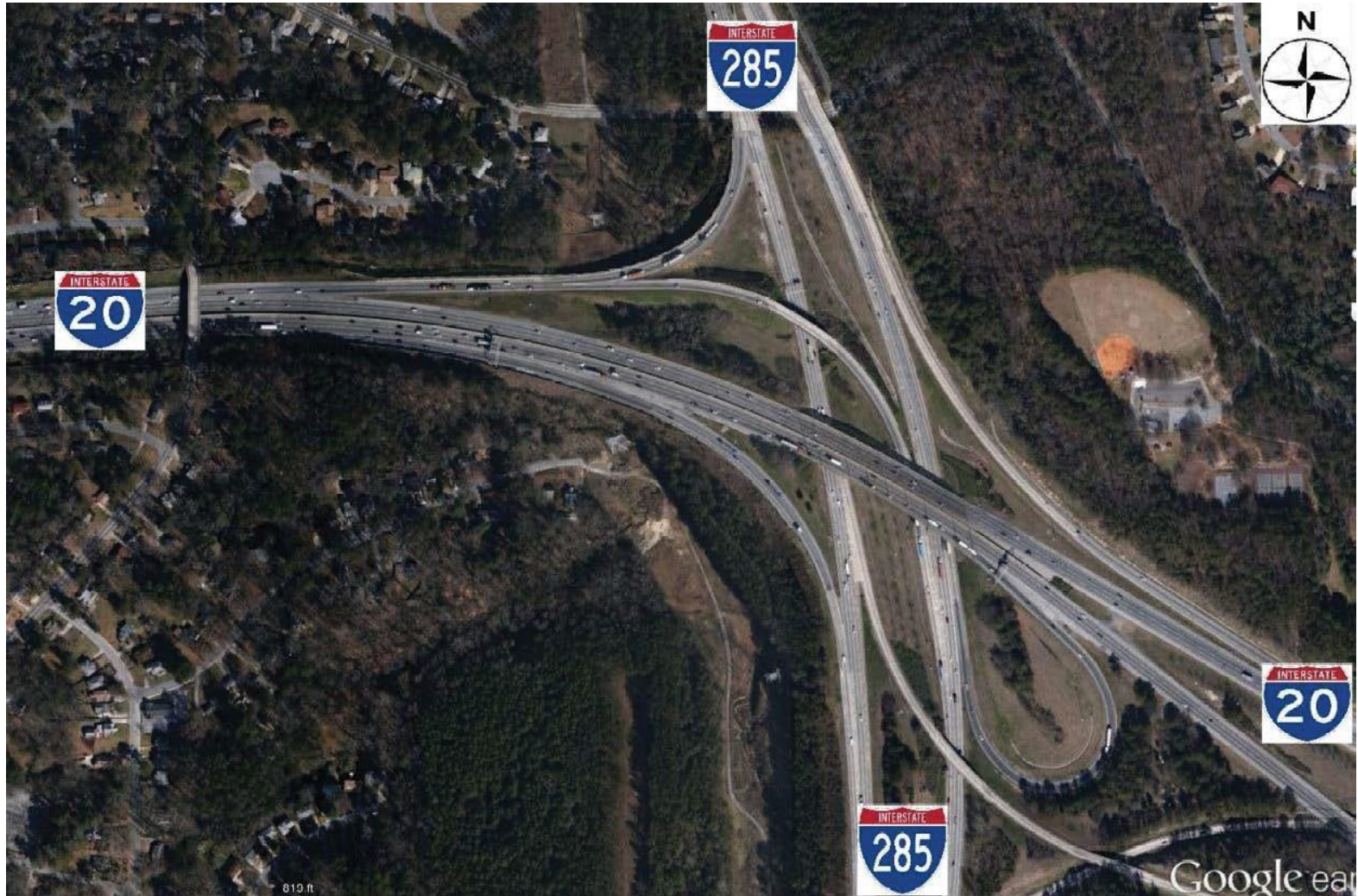
I-20 at I-285 Operational Improvement Project in Fulton County, Congressional District 5





I-20 at I-285

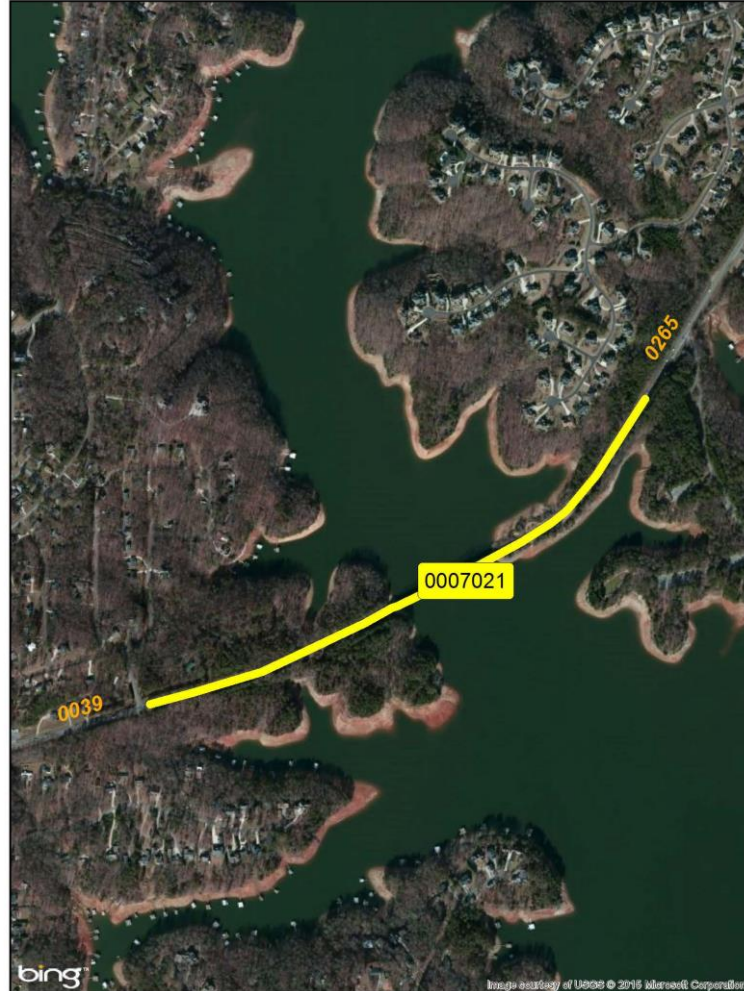
Operational Improvement Project in Fulton County, Congressional District 5





SR 53 @ CHESTATEE RIVER

Bridge Replacement Project in Forsyth County, Congressional District 9



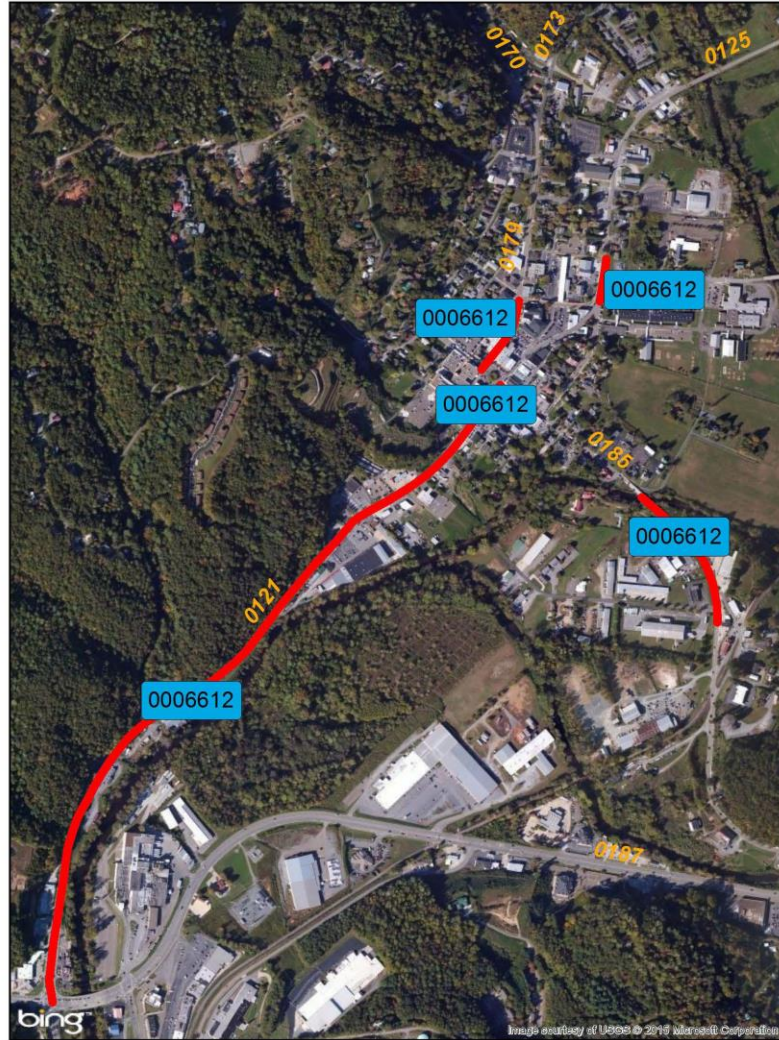
SR 53 @ CHESTATEE RIVER

Bridge Replacement Project in Forsyth County, Congressional District 9



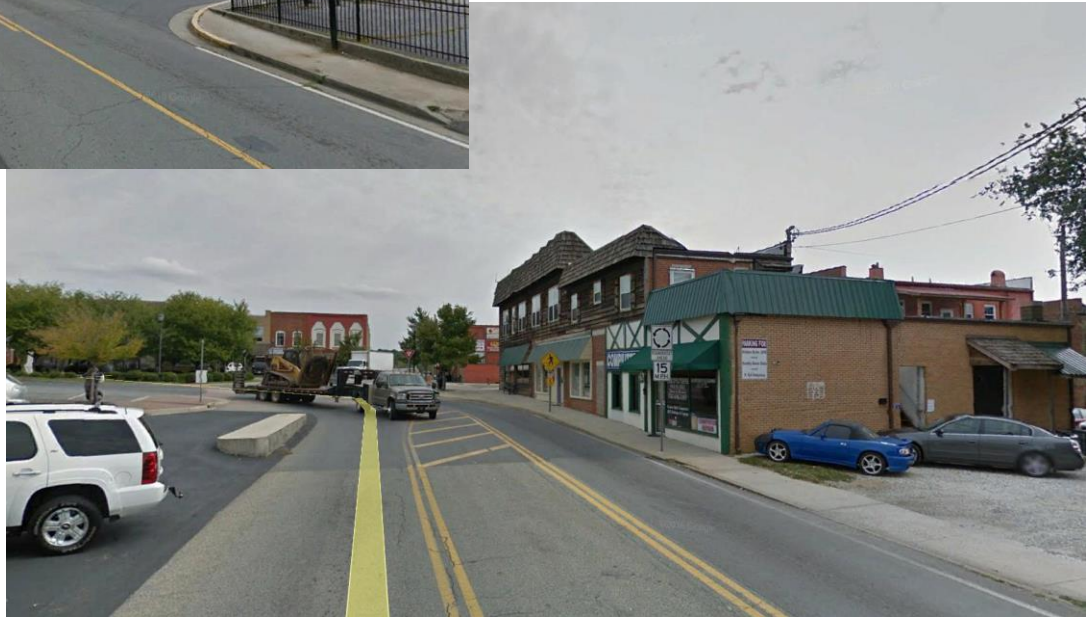


Ellijay Streetscape from SR 282 to Spring Street - Phase III Streetscape Project in Gilmer County, Congressional District 9



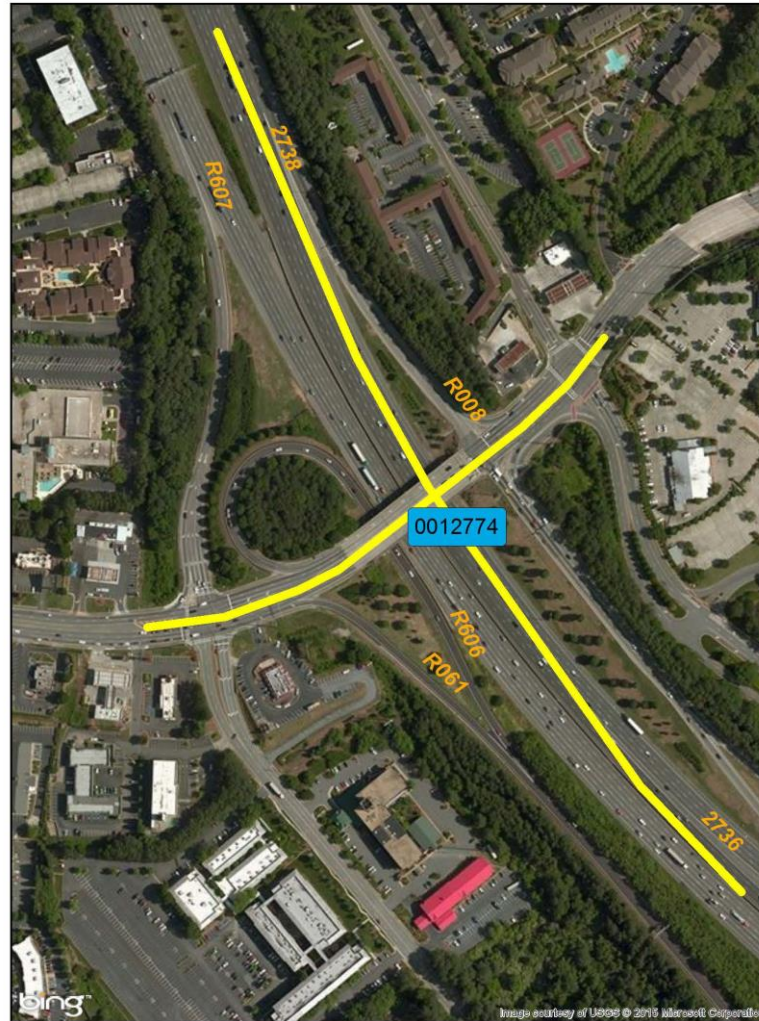


Ellijay Streetscape from SR 282 to Spring Street - Phase III Streetscape Project in Gilmer County, Congressional District 9





I-75 at CR 7958/Windy Hill Road – Diverging Diamond Interchange Interchange Project in Cobb County, Congressional District 11



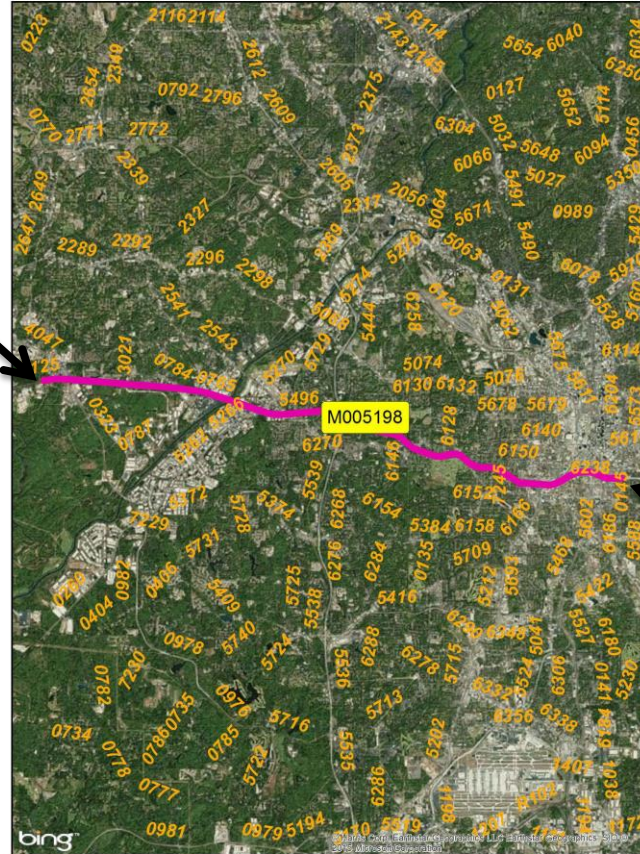
I-75 at CR 7958/Windy Hill Road – Diverging Diamond Interchange Interchange Project in Cobb County, Congressional District 11





I-20 from Sweetwater Creek to CS 3541/Hill Street Resurfacing Project in Fulton County, Congressional District 13

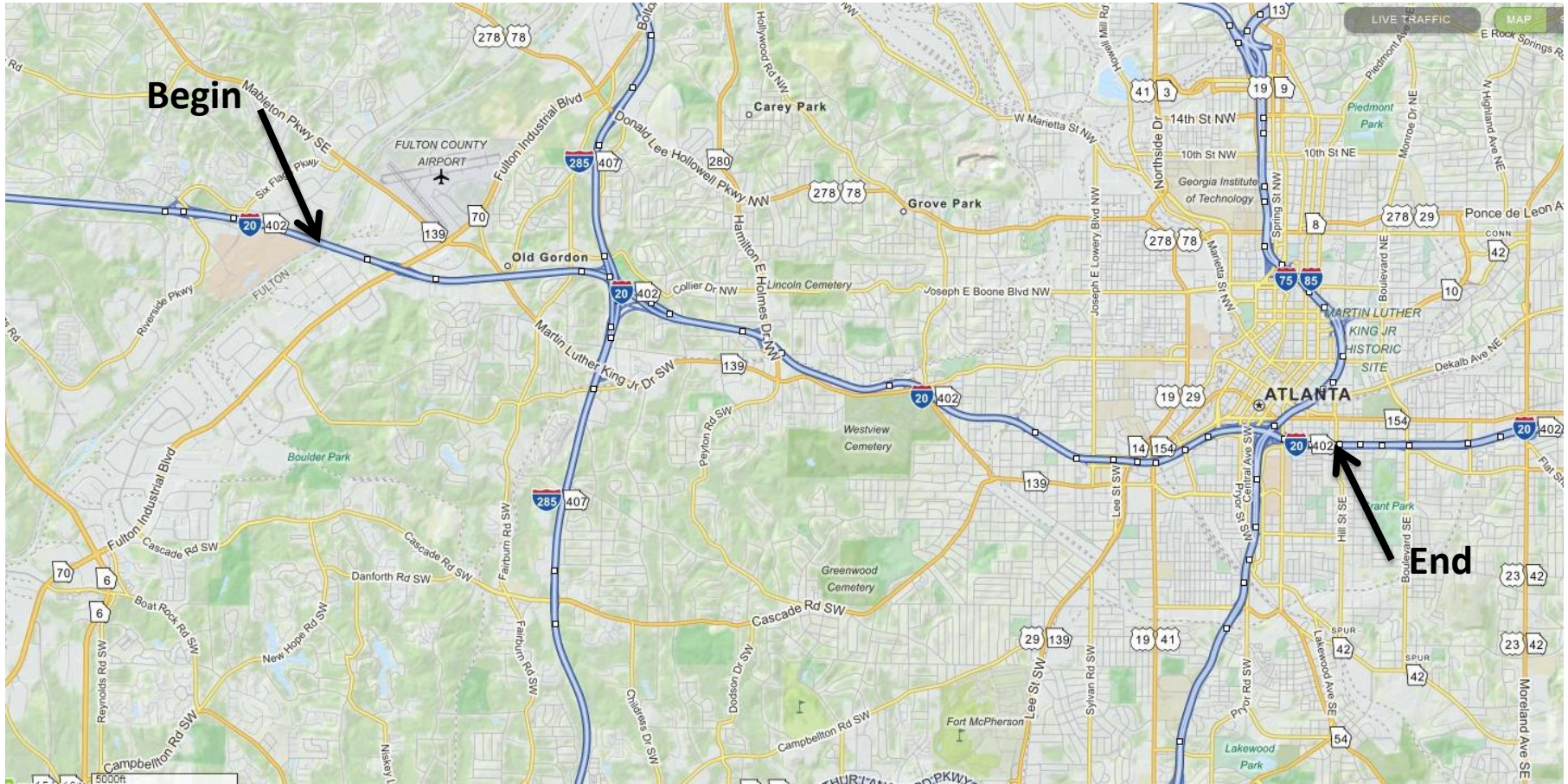
Begin



End



I-20 from Sweetwater Creek to CS 3541/Hill Street Resurfacing Project in Fulton County, Congressional District 13



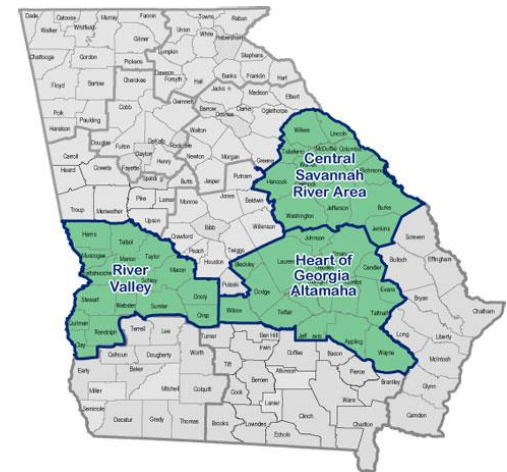


September Letting Proposed TIA Projects

Mike Dover, P.E.

Deputy Commissioner

August 20, 2015





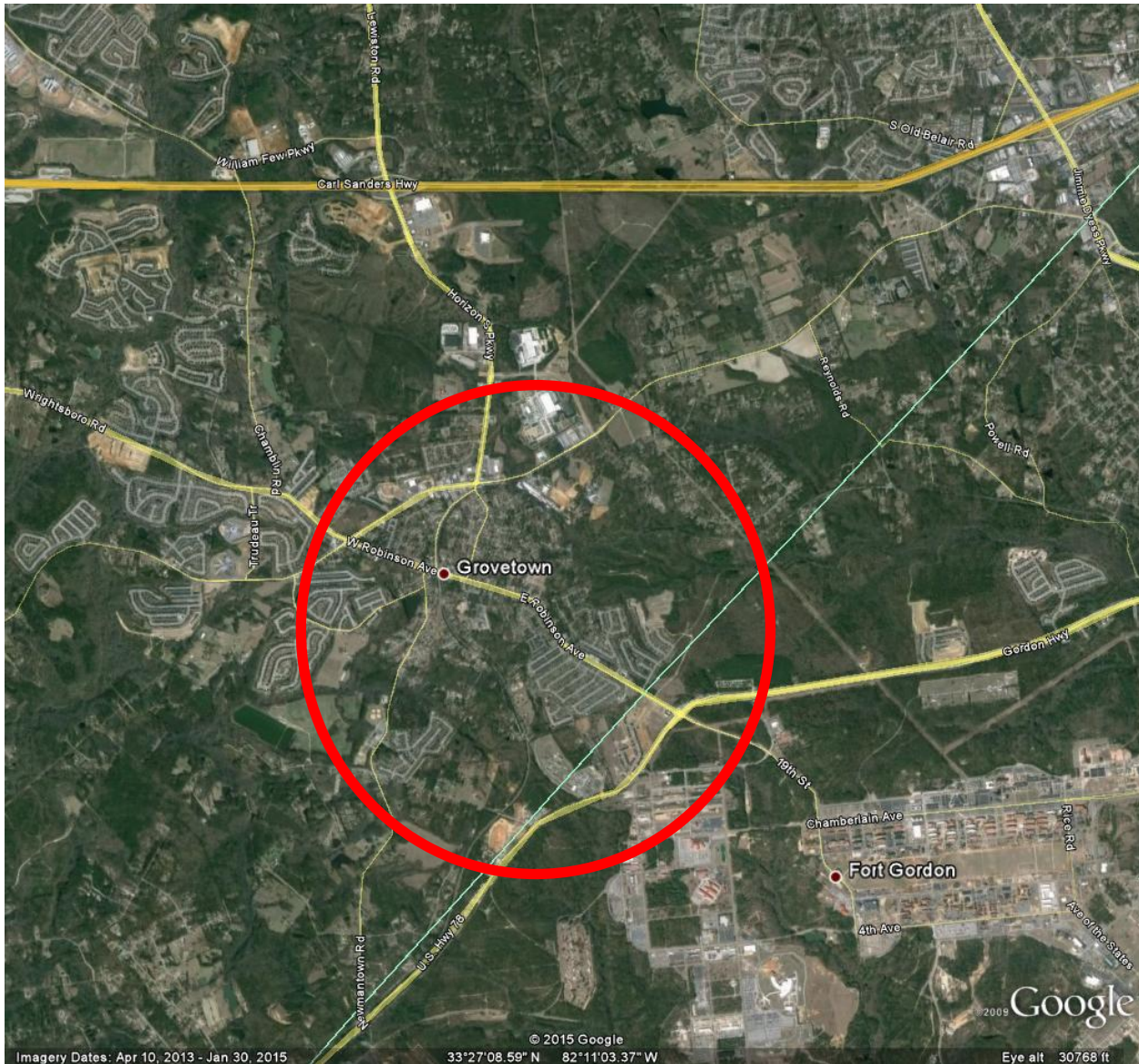
TIA Projects

September 2015 Letting

| Project ID | Description | Primary County | Primary Work Type | Congressional District | Project Let By | TIA Region |
|------------|---|----------------|--------------------------|------------------------|----------------|-----------------------------|
| 0011414 | SR 223 Robinson Avenue FROM SR 388/COLUMBIA TO SR 10/RICHMOND - TIA | COLUMBIA | Roadway Project | 12 | DOT | Central Savannah River Area |
| 0011699 | I-20 @ SR 104/ Riverwatch Parkway – TIA | RICHMOND | Interchange Improvements | 12 | DOT | Central Savannah River Area |
| 245320- | CR 65/WINDSOR SPRING RD FM SR 88 TO WILLIS FOREMAN RD - TIA | RICHMOND | Widening | 12 | DOT | Central Savannah River Area |



SR 223-Robinson Avenue in Grovetown



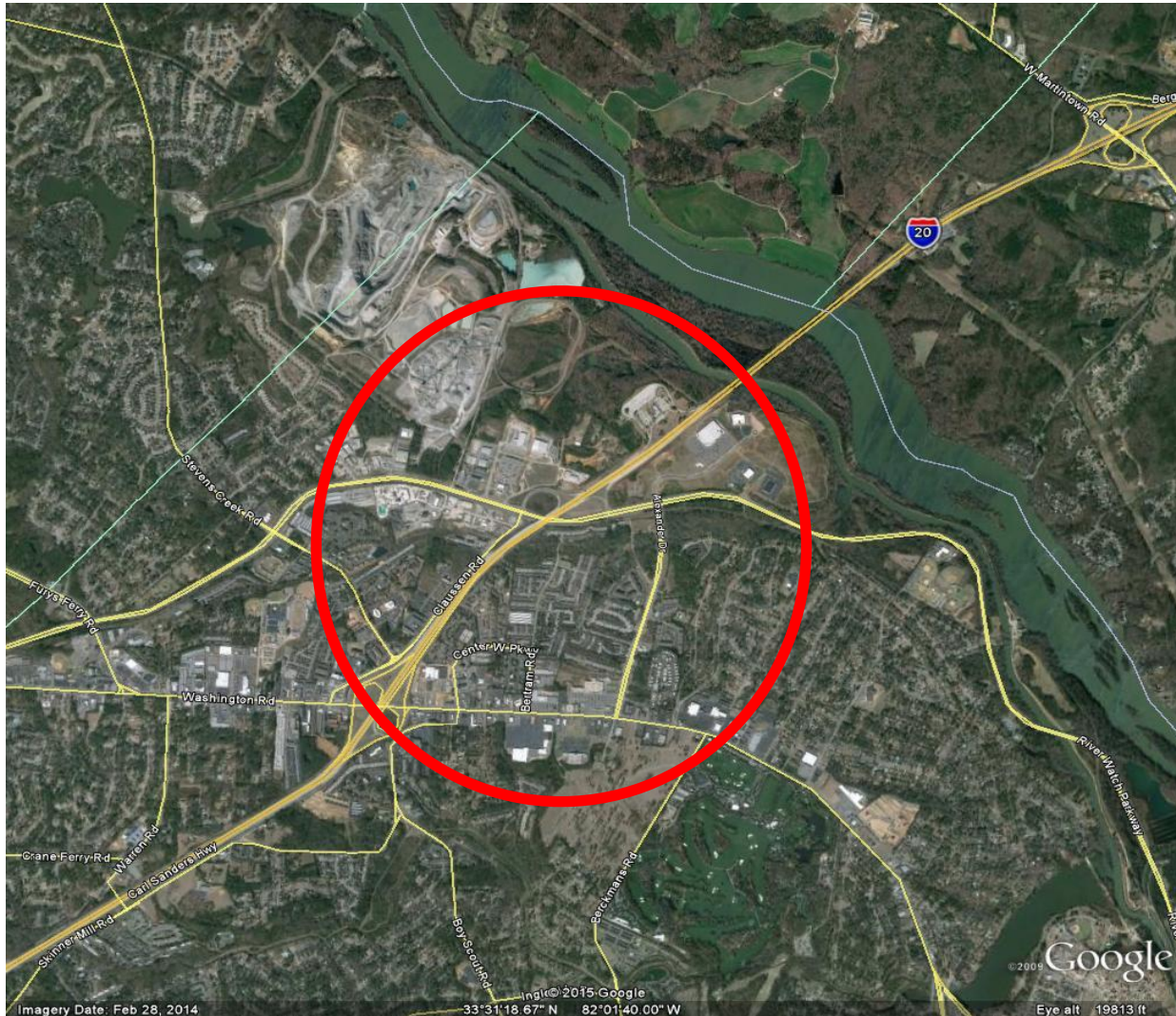


SR 223-Robinson Avenue in Grovetown





I-20 @ SR 104 Riverwatch Parkway Interchange Improvements





I-20 @ SR 104 Riverwatch Parkway Interchange Improvements





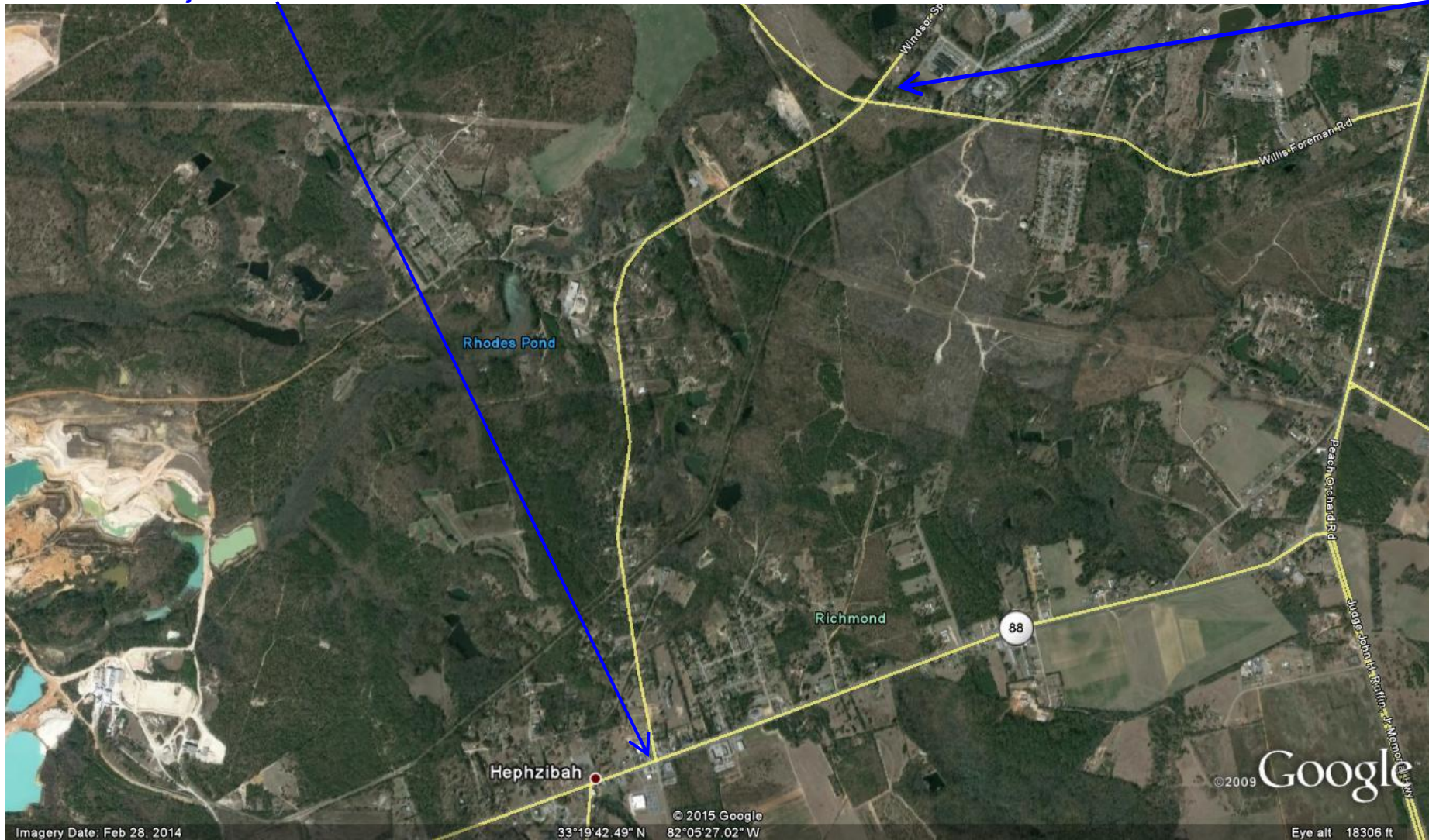
I-20 @ SR 104 Riverwatch Parkway Interchange Improvements



Windsor Spring Road Richmond County

Begin
Project

End
Project





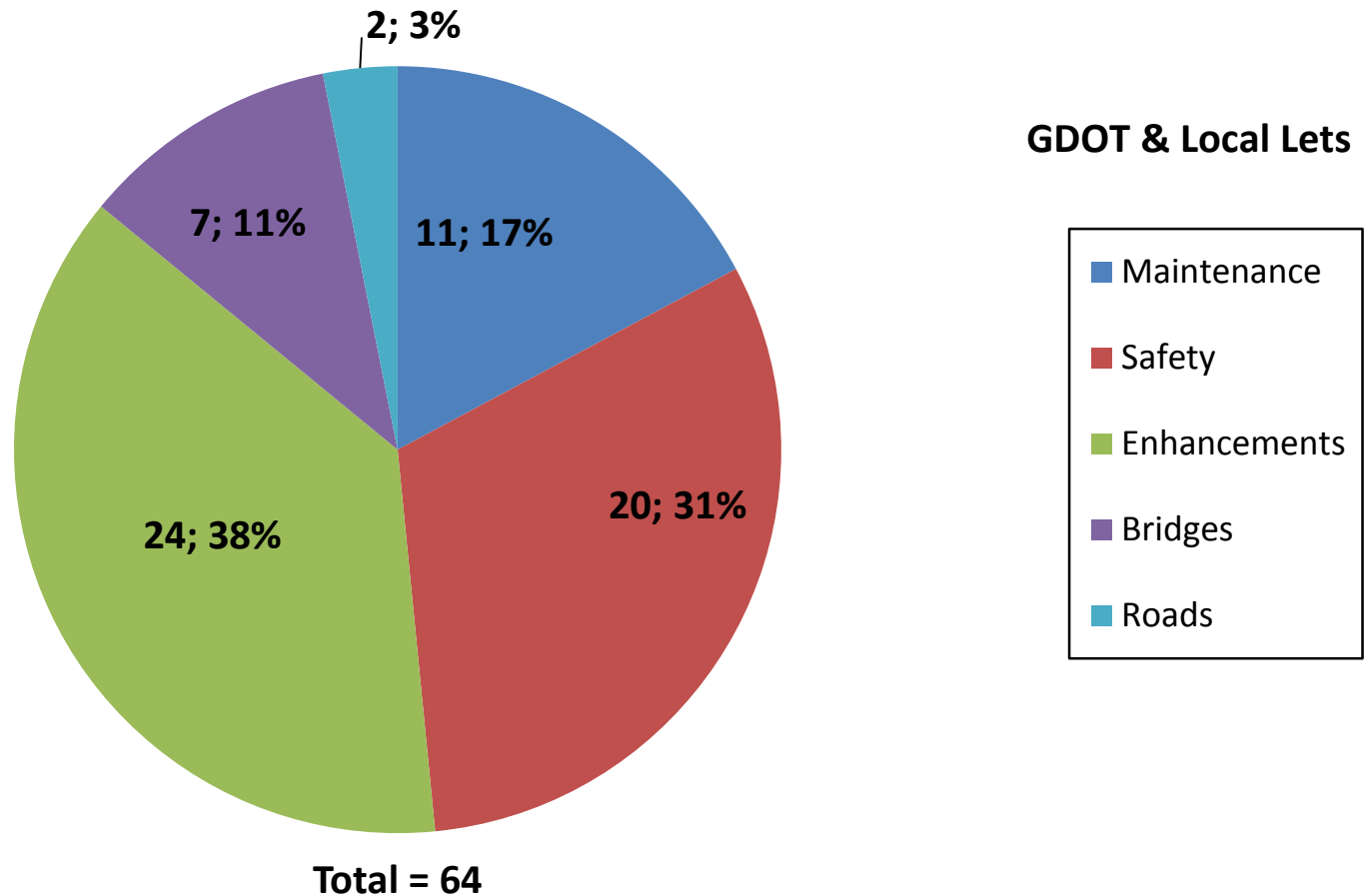
Windsor Spring Road Richmond County





Fiscal Year 2016 Letting Report

Number of Projects September 2015 Letting



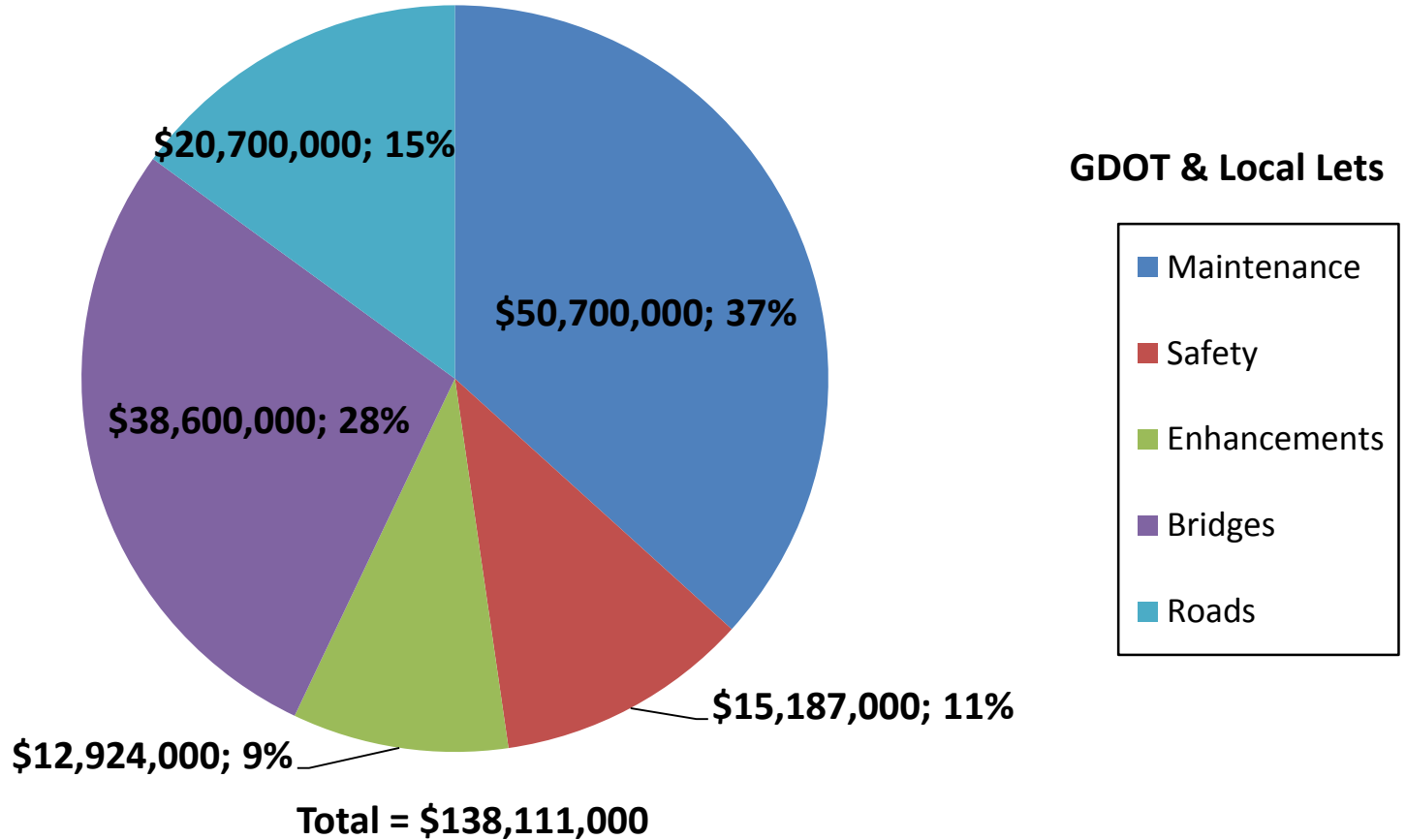
Does not include LMIG Projects

*As of August 12, 2015
Source TPro – Chief Approved FY '16 Letting List*



Fiscal Year 2016 Letting Report

Dollar Amount of Projects September 2015 Letting



Does not include LMIG Projects

As of August 12, 2015
Source TPro – Chief Approved FY '16 Letting List



Proposed Revisions To The Construction Work Program

**Jay Roberts
Director of Planning**

August 20, 2015



August 2015 CWP Revision

Board Revisions:

1. **P.I. No. 0009861**, Bibb County, SR 11/SR 49 at Rocky Creek and Overflow and at the Tobesofkee Creek and Overflow– Bridge Replacements in Congressional District 2

Action: Change in Description

2. **P.I. No. 0013699**, Ben Hill County, CR 247/Perry House Road at Willacoochee Creek – Bridge Replacement in Congressional District 8

Action: Addition to the Program



September 2015 CWP Revision

Board Revisions:

1. P.I. No. 0013713, Brantley County, SR 520/US 82 at Big Creek 3 miles west of Hoboken – Bridge Replacement in Congressional District 1
Action: Addition to the Program
2. P.I. No. 0013719, Long County, SR 38/US 84 at Doctors Creek 3 miles east of Ludowici –Bridge Replacement in Congressional District 1
Action: Addition to the Program
3. P.I. No. 0013738, Camden County, SR 25 at White Oak Creek 5 miles north of Woodbine–Bridge Replacement in Congressional District 1
Action: Addition to the Program
4. P.I. No. 0013739, Camden County, SR 25 at Little Waverly Creek and Waverly Creek north of Woodbine – Bridge Replacement in Congressional District 1
Action: Addition to the Program
5. P.I. No. 0013741, Chatham County, SR 25/US 17 at Savannah River in Port Wentworth – Bridge Replacement in Congressional District 1
Action: Addition to the Program
6. P.I. No. 0013742, Chatham County, SR 25/US 17 at Middle River in Port Wentworth – Bridge Replacement in Congressional District 1
Action: Addition to the Program



September 2015 CWP Revision

Board Revisions:

7. P.I. No. 0013745, Glynn County, SR 25 Spur east at Mackay River 3 miles east of Brunswick – Bridge Replacement in Congressional District 1
Action: Addition to the Program
8. P.I. No. 0013750, Liberty County, SR 119 at Taylors Creek 3 miles NW of Hinesville – Bridge Replacement in Congressional District 1
Action: Addition to the Program
9. P.I. No. 0013712, Bibb County, SR 11/SR 49/US 41 at NS #734080Y 1.4 miles south of Macon – Bridge Replacement in Congressional District 2
Action: Addition to the Program
10. P.I. No. 0013737, Calhoun County, SR 37 at Pachitla Creek and Overflow 1.2 miles west of Dickey – Bridge Replacement in Congressional District 2
Action: Addition to the Program
11. P.I. No. 0013743, Chattahoochee County, SR 520/US 280 EB and WB at Bagley Creek 2 miles SE of Cusseta – Bridge Replacement in Congressional District 2
Action: Addition to the Program
12. P.I. No. 0013715, Sumter County, SR 377 at HOG #632346H in Americus–Bridge Replacement in Congressional District 2
Action: Addition to the Program



September 2015 CWP Revision

Board Revisions:

13. P.I. No. 0013717, Coweta County, SR 54 at Bear Creek 3.5 miles SE of Moreland – Bridge Replacement in Congressional District 3
Action: Addition to the Program
14. P.I. No. 0013740, Carroll County, SR 166 at Big Indian Creek 1.9 miles west of Bowden –Bridge Replacement in Congressional District 3
Action: Addition to the Program
15. P.I. No. 0013751, Newton County, SR 81 at Dried Indian Creek in Covington–Bridge Replacement in Congressional District 4
Action: Addition to the Program
16. P.I. No. 0013711, Berrien, Coffee, and Irwin Counties, SR 158 @ Willacoochee River 7.1 miles NE of Alapha – Bridge Replacement in Congressional Districts 8 and 12
Action: Addition to the Program
17. P.I. No. 0013714, Brooks County, SR 76/SR 333 at CS 735/Bay Street and CSX #636942L in Quitman – Bridge Replacement in Congressional District 8
Action: Addition to the Program
18. P.I. No. 0013732, Irwin and Tift Counties, SR 35 FROM Ferry Lake Road/Tift to Stump Creek/Irwin at 3 locations – Passing Lanes District 8
Action: Addition to the Program



September 2015 CWP Revision

Board Revisions:

19. P.I. No. 0013744, Colquitt County, SR 111 at Little Creek Tributary 5 miles SW of Moultrie – Bridge Replacement in Congressional District 8
Action: Addition to the Program
20. P.I. No. 0013716, Clarke County, SR 10 Loop EB and WB at SR 8/US 29 – Bridge Replacement in Congressional District 9
Action: Addition to the Program
21. P.I. No. 0013746, Habersham County, SR 385 at Hazel Creek in Demorest – Bridge Replacement in Congressional District 9
Action: Addition to the Program
22. P.I. No. 0013747, Hart County, SR 8 at Beaverdam Creek 1.7 miles east of Royston – Bridge Replacement in Congressional District 9
Action: Addition to the Program
23. P.I. No. 0013715, Clarke County, SR 10 Loop EB and WB at Middle Oconee River 5 miles east of Bogart – Bridge Replacement in Congressional District 10
Action: Addition to the Program
24. P.I. No. 0013735, Baldwin County, SR 22 at Little Fishing Creek in Milledgeville – Bridge Replacement in Congressional District 10
Action: Addition to the Program



September 2015 CWP Revision

Board Revisions:

25. P.I. No. 0013748, Emanuel and Johnson Counties, SR 26 at Ochoopee River 1.1 miles east of Adrian – Bridge Replacement in Congressional Districts 10 and 12.
Action: Addition to the Program

26. P.I. No. 0013736, Burke County, SR 56 at Brack Creek 5.8 miles NE of Midville – Bridge Replacement in Congressional District 12
Action: Addition to the Program

27. P.I. No. 0013749, Laurens County, SR 29 at Pughes Creek 7 miles SE of East Dublin – Bridge Replacement in Congressional District 12
Action: Addition to the Program

28. P.I. No. 0013718, Floyd County, SR 1/SR 20/US 27 at the Etowa River and NS #719103R in Rome– Bridge Replacement in Congressional District 14
Action: Addition to the Program